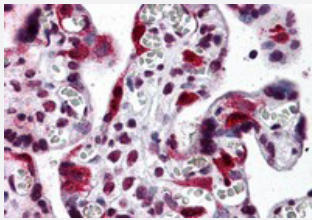


# LZTS2 polyclonal antibody

Catalog # PAB25705      Size 100 ug

## Applications



### Immunohistochemistry

Immunohistochemical analysis of LZTS2 in human placenta tissue with LZTS2 polyclonal antibody (Cat # PAB25705) at 5 ug/mL.

## Specification

<b>Product Description</b>	Rabbit polyclonal antibody raised against synthetic peptide of LZTS2.
<b>Immunogen</b>	A synthetic peptide corresponding to 17 amino acids at C-terminus of human LZTS2.
<b>Host</b>	Rabbit
<b>Reactivity</b>	Human
<b>Specificity</b>	LZTS2 antibody is predicted to not cross-react with other LZTS family members.
<b>Form</b>	Liquid
<b>Purification</b>	Peptide affinity purification
<b>Concentration</b>	1 mg/mL
<b>Isotype</b>	IgG
<b>Recommend Usage</b>	Immunohistochemistry (5 ug/mL) The optimal working dilution should be determined by the end user.
<b>Storage Buffer</b>	In PBS (0.05% sodium azide)

**Storage Instruction**

Store at 4°C for three months. For long term storage store at -20°C.  
Aliquot to avoid repeated freezing and thawing.

**Note**

This product contains sodium azide: a POISONOUS AND HAZARDOUS SUBSTANCE which should be handled by trained staff only.

## Applications

- Immunohistochemistry

Immunohistochemical analysis of LZTS2 in human placenta tissue with LZTS2 polyclonal antibody (Cat # PAB25705) at 5 ug/mL.

- Enzyme-linked Immunoabsorbent Assay

## Gene Info — LZTS2

Entrez GeneID [84445](#)

Protein Accession# [NP\\_115805](#)

Gene Name LZTS2

Gene Alias KIAA1813, LAPSER1

Gene Description leucine zipper, putative tumor suppressor 2

Omim ID [610454](#)

Gene Ontology [Hyperlink](#)

Gene Summary O

Other Designations OTTHUMP00000020289|OTTHUMP00000020290

## Disease

- [Alzheimer Disease](#)

- [Genetic Predisposition to Disease](#)