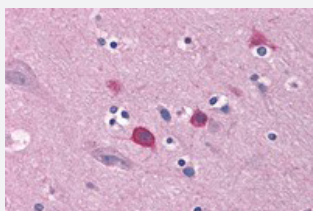


# BOK polyclonal antibody

Catalog # PAB25702      Size 100 ug

## Applications



### Immunohistochemistry

Immunohistochemical analysis of BOK in human brain tissue with BOK polyclonal antibody (Cat # PAB25702) at 5 ug/mL.

## Specification

<b>Product Description</b>	Rabbit polyclonal antibody raised against synthetic peptide of BOK.
<b>Immunogen</b>	A synthetic peptide corresponding to 16 amino acids at N-terminus of human BOK.
<b>Host</b>	Rabbit
<b>Reactivity</b>	Human
<b>Specificity</b>	At least three isoforms of BOK are known to exist; this antibody will not detect the smallest isoform. BOK antibody is predicted to not cross-react with other Bcl-2 protein family members.
<b>Form</b>	Liquid
<b>Purification</b>	Peptide affinity purification
<b>Concentration</b>	1 mg/mL
<b>Isotype</b>	IgG
<b>Recommend Usage</b>	Immunohistochemistry (5 ug/mL) The optimal working dilution should be determined by the end user.
<b>Storage Buffer</b>	In PBS (0.05% sodium azide)

**Storage Instruction**

Store at 4°C for three months. For long term storage store at -20°C.  
Aliquot to avoid repeated freezing and thawing.

**Note**

This product contains sodium azide: a POISONOUS AND HAZARDOUS SUBSTANCE which should be handled by trained staff only.

## Applications

- Immunohistochemistry

Immunohistochemical analysis of BOK in human brain tissue with BOK polyclonal antibody (Cat # PAB25702) at 5 ug/mL.

- Enzyme-linked Immunoabsorbent Assay

## Gene Info — BOK

**Entrez GeneID**[666](#)**Protein Accession#**[AAH06203](#)**Gene Name**

BOK

**Gene Alias**

BCL2L9, BOKL, MGC4631

**Gene Description**

BCL2-related ovarian killer

**Omim ID**[605404](#)**Gene Ontology**[Hyperlink](#)**Gene Summary**

The protein encoded by this gene belongs to the BCL-2 protein family. BCL-2 family members form hetero- or homodimers and act as anti- and pro-apoptotic regulators that are involved in a wide variety of cellular activities. This protein contains all four BCL-2 like domains (BH1, 2, 3 and 4) and is a pro-apoptotic BCL-2 protein identified in the ovary. [provided by RefSeq]

**Other Designations**

-