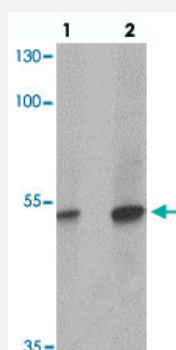


TFCP2L1 polyclonal antibody

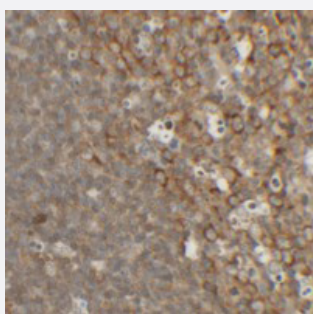
Catalog # PAB25697 Size 100 ug

Applications



Western Blot (Tissue lysate)

Western blot analysis of TFCP2L1 in human colon tissue with TFCP2L1 polyclonal antibody (Cat # PAB25697) at (1) 1 and (2) 2 ug/mL.



Immunohistochemistry

Immunohistochemical analysis of TFCP2L1 in rat colon tissue with TFCP2L1 polyclonal antibody (Cat # PAB25697) at 2.5 ug/mL.

Specification

Product Description	Rabbit polyclonal antibody raised against synthetic peptide of TFCP2L1.
Immunogen	A synthetic peptide corresponding to 15 amino acids at N-terminus of human TFCP2L1.
Host	Rabbit
Reactivity	Human, Mouse, Rat
Form	Liquid
Purification	Peptide affinity purification
Concentration	1 mg/mL

Isotype	IgG
Recommend Usage	Western Blot (1-2 ug/mL) Immunohistochemistry (2.5 ug/mL) The optimal working dilution should be determined by the end user.
Storage Buffer	In PBS (0.05% sodium azide)
Storage Instruction	Store at 4°C for three months. For long term storage store at -20°C. Aliquot to avoid repeated freezing and thawing.
Note	This product contains sodium azide: a POISONOUS AND HAZARDOUS SUBSTANCE which should be handled by trained staff only.

Applications

- Western Blot (Tissue lysate)

Western blot analysis of TFCP2L1 in human colon tissue with TFCP2L1 polyclonal antibody (Cat # PAB25697) at (1) 1 and (2) 2 ug/mL.

- Immunohistochemistry

Immunohistochemical analysis of TFCP2L1 in rat colon tissue with TFCP2L1 polyclonal antibody (Cat # PAB25697) at 2.5 ug/mL.

- Enzyme-linked Immunoabsorbent Assay

Gene Info — TFCP2L1

Entrez GeneID	29842
Protein Accession#	NP_055368
Gene Name	TFCP2L1
Gene Alias	CRTR1, LBP-9, LBP9
Gene Description	transcription factor CP2-like 1
Omim ID	609785
Gene Ontology	Hyperlink
Other Designations	LBP-9