

# RILP polyclonal antibody

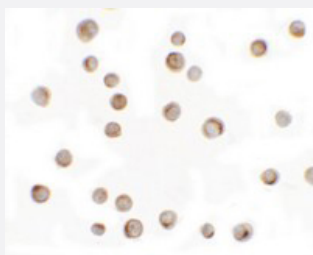
Catalog # PAB25693      Size 100 ug

## Applications



### Western Blot (Cell lysate)

Western blot analysis of RILP in A-20 cell lysate with RILP polyclonal antibody (Cat # PAB25693) at 1 ug/mL.



### Immunocytochemistry

Immunocytochemical analysis of RILP in HeLa cell lysate with RILP polyclonal antibody (Cat # PAB25693) at 2.5 ug/mL.

## Specification

<b>Product Description</b>	Rabbit polyclonal antibody raised against synthetic peptide of RILP.
<b>Immunogen</b>	A synthetic peptide corresponding to 18 amino acids at internal region of human RILP.
<b>Host</b>	Rabbit
<b>Reactivity</b>	Human, Mouse
<b>Form</b>	Liquid
<b>Purification</b>	Peptide affinity purification
<b>Concentration</b>	1 mg/mL

Isotype	IgG
Recommend Usage	Western Blot (1 ug/mL) Immunocytochemistry (2.5 ug/mL) The optimal working dilution should be determined by the end user.
Storage Buffer	In PBS (0.05% sodium azide)
Storage Instruction	Store at 4°C for three months. For long term storage store at -20°C. Aliquot to avoid repeated freezing and thawing.
Note	This product contains sodium azide: a POISONOUS AND HAZARDOUS SUBSTANCE which should be handled by trained staff only.

## Applications

- Western Blot (Cell lysate)

Western blot analysis of RILP in A-20 cell lysate with RILP polyclonal antibody (Cat # PAB25693) at 1 ug/mL.

- Immunocytochemistry

Immunocytochemical analysis of RILP in HeLa cell lysate with RILP polyclonal antibody (Cat # PAB25693) at 2.5 ug/mL.

- Enzyme-linked Immunoabsorbent Assay

## Gene Info — RILP

Entrez GeneID	<a href="#">83547</a>
Protein Accession#	<a href="#">NP_113618</a>
Gene Name	RILP
Gene Alias	FLJ31193, PP10141
Gene Description	Rab interacting lysosomal protein
Omim ID	<a href="#">607848</a>
Gene Ontology	<a href="#">Hyperlink</a>
Gene Summary	RILP, along with the GTPase RAB7 (MIM 602298), controls late endocytic transport.[supplied by OMIM]
Other Designations	-

## Disease

- [Cardiovascular Diseases](#)
- [Diabetes Mellitus](#)
- [Edema](#)