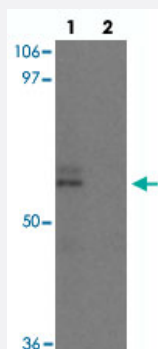


NCLN polyclonal antibody

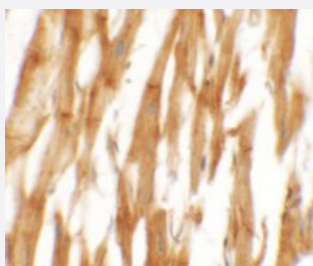
Catalog # PAB25692 Size 100 ug

Applications



Western Blot (Tissue lysate)

Western blot analysis of NCLN in mouse heart tissue with NCLN polyclonal antibody (Cat # PAB25692) at 0.5 ug/mL in (1) the absence and (2) the presence of blocking peptide.



Immunohistochemistry

Immunohistochemical analysis of NCLN in human heart tissue with NCLN polyclonal antibody (Cat # PAB25692) at 2.5 ug/mL.

Specification

Product Description	Rabbit polyclonal antibody raised against synthetic peptide of NCLN.
Immunogen	A synthetic peptide corresponding to 18 amino acids at C-terminus of human NCLN.
Host	Rabbit
Reactivity	Human, Mouse, Rat
Form	Liquid
Purification	Peptide affinity purification
Concentration	1 mg/mL

Isotype	IgG
Recommend Usage	Western Blot (0.5 ug/mL) Immunohistochemistry (2.5 ug/mL) The optimal working dilution should be determined by the end user.
Storage Buffer	In PBS (0.05% sodium azide)
Storage Instruction	Store at 4°C for three months. For long term storage store at -20°C. Aliquot to avoid repeated freezing and thawing.
Note	This product contains sodium azide: a POISONOUS AND HAZARDOUS SUBSTANCE which should be handled by trained staff only.

Applications

- Western Blot (Tissue lysate)

Western blot analysis of NCLN in mouse heart tissue with NCLN polyclonal antibody (Cat # PAB25692) at 0.5 ug/mL in (1) the absence and (2) the presence of blocking peptide.

- Immunohistochemistry

Immunohistochemical analysis of NCLN in human heart tissue with NCLN polyclonal antibody (Cat # PAB25692) at 2.5 ug/mL.

- Enzyme-linked Immunoabsorbent Assay

Gene Info — NCLN

Entrez GeneID	56926
Protein Accession#	NP_064555
Gene Name	NCLN
Gene Alias	-
Gene Description	nicalin homolog (zebrafish)
Omim ID	609156
Gene Ontology	Hyperlink
Other Designations	nicalin nicalin homolog (zebrafish) nicastrin-like protein