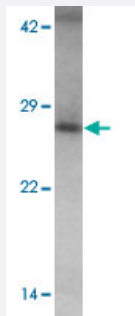


TMEM106B polyclonal antibody

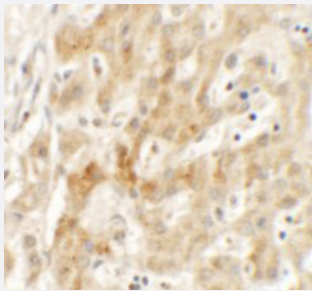
Catalog # PAB25689 Size 100 ug

Applications



Western Blot (Tissue lysate)

Western blot analysis of TMEM106B in human liver tissue with TMEM106B polyclonal antibody (Cat # PAB25689) at 1 ug/mL.



Immunohistochemistry

Immunohistochemical analysis of TMEM106B in human liver tissue with TMEM106B polyclonal antibody (Cat # PAB25689) at 2.5 ug/mL.

Specification

Product Description	Rabbit polyclonal antibody raised against synthetic peptide of TMEM106B.
Immunogen	A synthetic peptide corresponding to 15 amino acids at N-terminus of human TMEM106B.
Host	Rabbit
Reactivity	Human
Form	Liquid
Purification	Peptide affinity purification
Concentration	1 mg/mL

Isotype	IgG
Recommend Usage	Western Blot (1 ug/mL) Immunohistochemistry (2.5 ug/mL) The optimal working dilution should be determined by the end user.
Storage Buffer	In PBS (0.05% sodium azide)
Storage Instruction	Store at 4°C for three months. For long term storage store at -20°C. Aliquot to avoid repeated freezing and thawing.
Note	This product contains sodium azide: a POISONOUS AND HAZARDOUS SUBSTANCE which should be handled by trained staff only.

Applications

- Western Blot (Tissue lysate)

Western blot analysis of TMEM106B in human liver tissue with TMEM106B polyclonal antibody (Cat # PAB25689) at 1 ug/mL.

- Immunohistochemistry

Immunohistochemical analysis of TMEM106B in human liver tissue with TMEM106B polyclonal antibody (Cat # PAB25689) at 2.5 ug/mL.

- Enzyme-linked Immunoabsorbent Assay

Gene Info — TMEM106B

Entrez GeneID	54664
Protein Accession#	NP_060844
Gene Name	TMEM106B
Gene Alias	FLJ11273, MGC33727
Gene Description	transmembrane protein 106B
Gene Ontology	Hyperlink
Other Designations	OTTHUMP00000155197

Disease

- [Frontotemporal Lobar Degeneration](#)
- [Genetic Predisposition to Disease](#)