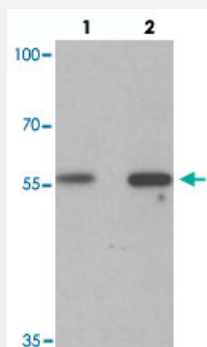


GHDC polyclonal antibody

Catalog # PAB25685 Size 100 ug

Applications



Western Blot (Cell lysate)

Western blot analysis of GHDC in 293 cell lysate with GHDC polyclonal antibody (Cat # PAB25685) at (1) 0.5 and (2) 1 ug/mL.

Specification

Product Description	Rabbit polyclonal antibody raised against synthetic peptide of GHDC.
Immunogen	A synthetic peptide corresponding to 19 amino acids at N-terminus of human GHDC.
Host	Rabbit
Theoretical MW (kDa)	58
Reactivity	Human, Mouse, Rat
Specificity	Multiple isoforms are known to exist.
Form	Liquid
Purification	Peptide affinity purification
Concentration	1 mg/mL
Isotype	IgG
Recommend Usage	Western Blot (0.5-1 ug/mL) The optimal working dilution should be determined by the end user.

Storage Buffer	In PBS (0.05% sodium azide)
Storage Instruction	Store at 4°C for three months. For long term storage store at -20°C. Aliquot to avoid repeated freezing and thawing.
Note	This product contains sodium azide: a POISONOUS AND HAZARDOUS SUBSTANCE which should be handled by trained staff only.

Applications

- Western Blot (Cell lysate)

Western blot analysis of GHDC in 293 cell lysate with GHDC polyclonal antibody (Cat # PAB25685) at (1) 0.5 and (2) 1 ug/mL.

- Enzyme-linked Immunoabsorbent Assay

Gene Info — GHDC

Entrez GeneID	84514
Protein Accession#	NP_115873
Gene Name	GHDC
Gene Alias	D11LGP1, LGP1
Gene Description	GH3 domain containing
Omim ID	608587
Gene Ontology	Hyperlink
Other Designations	D11lgp1e-like LGP1 homolog homolog of mouse LGP1