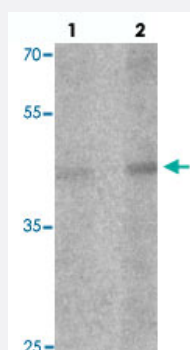


LMX1A polyclonal antibody

Catalog # PAB25678 Size 100 ug

Applications



Western Blot (Tissue lysate)

Western blot analysis of LMX1A in rat brain tissue with LMX1A polyclonal antibody (Cat # PAB25678) at (1) 1 and (2) 2 ug/mL.

Specification

Product Description	Rabbit polyclonal antibody raised against synthetic peptide of LMX1A.
Immunogen	A synthetic peptide corresponding to 16 amino acids at C-terminus of human LMX1A.
Host	Rabbit
Theoretical MW (kDa)	42
Reactivity	Human, Mouse, Rat
Specificity	At least two isoforms are known to exist. This antibody is predicted to not cross-react with LMX1B.
Form	Liquid
Purification	Peptide affinity purification
Concentration	1 mg/mL
Isotype	IgG
Recommend Usage	Western Blot (1-2 ug/mL) The optimal working dilution should be determined by the end user.

Storage Buffer	In PBS (0.05% sodium azide)
Storage Instruction	Store at 4°C for three months. For long term storage store at -20°C. Aliquot to avoid repeated freezing and thawing.
Note	This product contains sodium azide: a POISONOUS AND HAZARDOUS SUBSTANCE which should be handled by trained staff only.

Applications

- Western Blot (Tissue lysate)

Western blot analysis of LMX1A in rat brain tissue with LMX1A polyclonal antibody (Cat # PAB25678) at (1) 1 and (2) 2 ug/mL.

- Enzyme-linked Immunoabsorbent Assay

Gene Info — LMX1A

Entrez GeneID	4009
Protein Accession#	NP_796372
Gene Name	LMX1A
Gene Alias	LMX-1, LMX1, LMX1.1, MGC87616
Gene Description	LIM homeobox transcription factor 1, alpha
Omim ID	600298
Gene Ontology	Hyperlink
Gene Summary	Insulin is produced exclusively by the beta cells in the islets of Langerhans in the pancreas. The level and beta-cell specificity of insulin gene expression are regulated by a set of nuclear genes that bind to specific sequences within the promoter of the insulin gene (INS; MIM 176730) and interact with RNA polymerase to activate or repress transcription. LMX1 is a homeodomain protein that binds an A/T-rich sequence in the insulin promoter and stimulates transcription of insulin (German et al., 1994 [PubMed 7698771]).[supplied by OMIM]
Other Designations	OTTHUMP00000032530 OTTHUMP00000032531 OTTHUMP00000032532

Disease

- [Diabetes Mellitus](#)

- [Genetic Predisposition to Disease](#)
- [Hypertension](#)
- [Osteoporosis](#)
- [Parkinson disease](#)
- [Schizophrenia](#)
- [Tobacco Use Disorder](#)