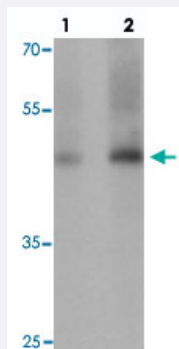


GDF1 polyclonal antibody

Catalog # PAB25675 Size 100 ug

Applications



Western Blot (Tissue lysate)

Western blot analysis of GDF1 in rat lung tissue with GDF1 polyclonal antibody (Cat # PAB25675) at (1) 1 and (2) 2 ug/mL.

Specification

Product Description	Rabbit polyclonal antibody raised against synthetic peptide of GDF1.
Immunogen	A synthetic peptide corresponding to 16 amino acids at N-terminus of human GDF1.
Host	Rabbit
Theoretical MW (kDa)	41
Reactivity	Human, Mouse, Rat
Specificity	GDF1 antibody is predicted to not cross-react with any other members of the growth differentiation factor family.
Form	Liquid
Purification	Peptide affinity purification
Concentration	1 mg/mL
Isotype	IgG

Recommend Usage	Western Blot (1-2 ug/mL) The optimal working dilution should be determined by the end user.
Storage Buffer	In PBS (0.05% sodium azide)
Storage Instruction	Store at 4°C for three months. For long term storage store at -20°C. Aliquot to avoid repeated freezing and thawing.
Note	This product contains sodium azide: a POISONOUS AND HAZARDOUS SUBSTANCE which should be handled by trained staff only.

Applications

- Western Blot (Tissue lysate)

Western blot analysis of GDF1 in rat lung tissue with GDF1 polyclonal antibody (Cat # PAB25675) at (1) 1 and (2) 2 ug/mL.

- Enzyme-linked Immunoabsorbent Assay

Gene Info — GDF1

Entrez GeneID	2657
Protein Accession#	NP_001483
Gene Name	GDF1
Gene Alias	-
Gene Description	growth differentiation factor 1
Omim ID	187500 217095 602880
Gene Ontology	Hyperlink
Gene Summary	This gene encodes a member of the bone morphogenetic protein (BMP) family and the TGF-beta superfamily. This group of proteins is characterized by a polybasic proteolytic processing site that is cleaved to produce a mature protein containing seven conserved cysteine residues. The members of this family are regulators of cell growth and differentiation in both embryonic and adult tissues. Studies in rodents suggest that this protein is involved in the establishment of left-right asymmetry in early embryogenesis and in neural development in later embryogenesis. This protein is transcribed from a bicistronic mRNA that also encodes the longevity assurance gene. [provided by RefSeq]
Other Designations	-

Disease

- [Cleft Lip](#)
- [Cleft Palate](#)
- [Genetic Predisposition to Disease](#)
- [Obesity](#)
- [Ovarian Failure](#)
- [Polycystic Ovary Syndrome](#)
- [Puberty](#)
- [Thrombophilia](#)
- [Tobacco Use Disorder](#)