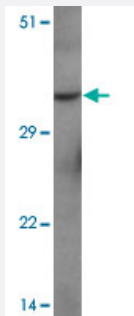


FOXH1 polyclonal antibody

Catalog # PAB25674 Size 100 ug

Applications



Western Blot (Tissue lysate)

Western blot analysis of FOXH1 in human liver tissue with FOXH1 polyclonal antibody (Cat # PAB25674) at 1 ug/mL.

Specification

Product Description	Rabbit polyclonal antibody raised against synthetic peptide of FOXH1.
Immunogen	A synthetic peptide corresponding to 19 amino acids at N-terminus of human FOXH1.
Host	Rabbit
Theoretical MW (kDa)	40
Reactivity	Human, Mouse, Rat
Specificity	FOXH1 antibody is predicted to not cross-react with any other members of the forkhead box family.
Form	Liquid
Purification	Peptide affinity purification
Concentration	1 mg/mL
Isotype	IgG
Recommend Usage	Western Blot (1-2 ug/mL) The optimal working dilution should be determined by the end user.

Storage Buffer	In PBS (0.05% sodium azide)
Storage Instruction	Store at 4°C for three months. For long term storage store at -20°C. Aliquot to avoid repeated freezing and thawing.
Note	This product contains sodium azide: a POISONOUS AND HAZARDOUS SUBSTANCE which should be handled by trained staff only.

Applications

- Western Blot (Tissue lysate)

Western blot analysis of FOXH1 in human liver tissue with FOXH1 polyclonal antibody (Cat # PAB25674) at 1 ug/mL.

- Enzyme-linked Immunoabsorbent Assay

Gene Info — FOXH1

Entrez GeneID	8928
Protein Accession#	NP_003914
Gene Name	FOXH1
Gene Alias	FAST-1, FAST1
Gene Description	forkhead box H1
Omim ID	603621
Gene Ontology	Hyperlink
Gene Summary	FOXH1 encodes a human homolog of Xenopus forkhead activin signal transducer-1. FOXH1 protein binds SMAD2 and activates an activin response element via binding the DNA motif TGT(G/T)(T/G)ATT. [provided by RefSeq]
Other Designations	TGF-beta/activin signal transducer forkhead activin signal transducer-1

Disease

- [Cleft Lip](#)
- [Cleft Palate](#)