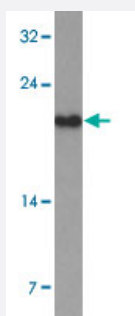


TDGF1 polyclonal antibody

Catalog # PAB25672 Size 100 ug

Applications



Western Blot (Cell lysate)

Western blot analysis of TDGF1 in 293 cell lysate with TDGF1 polyclonal antibody (Cat # PAB25672) at 1 ug/mL.

Specification

Product Description	Rabbit polyclonal antibody raised against synthetic peptide of TDGF1.
Immunogen	A synthetic peptide corresponding to 17 amino acids at N-terminus of human TDGF1.
Host	Rabbit
Theoretical MW (kDa)	21
Reactivity	Human, Mouse, Rat
Form	Liquid
Purification	Peptide affinity purification
Concentration	1 mg/mL
Isotype	IgG
Recommend Usage	Western Blot (1-2 ug/mL) The optimal working dilution should be determined by the end user.
Storage Buffer	In PBS (0.05% sodium azide)

Storage Instruction

Store at 4°C for three months. For long term storage store at -20°C.
Aliquot to avoid repeated freezing and thawing.

Note

This product contains sodium azide: a POISONOUS AND HAZARDOUS SUBSTANCE which should be handled by trained staff only.

Applications

- Western Blot (Cell lysate)

Western blot analysis of TDGF1 in 293 cell lysate with TDGF1 polyclonal antibody (Cat # PAB25672) at 1 ug/mL.

- Enzyme-linked Immunoabsorbent Assay

Gene Info — TDGF1

Entrez GeneID [6997](#)

Protein Accession# [NP_003203](#)

Gene Name TDGF1

Gene Alias CR, CRGF, CRIPTO, Cripto-1

Gene Description teratocarcinoma-derived growth factor 1

Omim ID [187395](#)

Gene Ontology [Hyperlink](#)

Other Designations -

Disease

- [Tobacco Use Disorder](#)