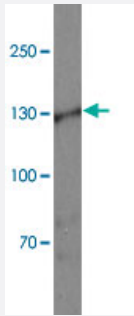


FMNL1 polyclonal antibody

Catalog # PAB25671 Size 100 ug

Applications



Western Blot (Cell lysate)

Western blot analysis of FMNL1 in EL4 cell lysate with FMNL1 polyclonal antibody (Cat # PAB25671) at 1 ug/mL.

Specification

Product Description	Rabbit polyclonal antibody raised against synthetic peptide of FMNL1.
Immunogen	A synthetic peptide corresponding to 16 amino acids at C-terminus of human FMNL1.
Host	Rabbit
Theoretical MW (kDa)	121
Reactivity	Human, Mouse, Rat
Specificity	FRL1 antibody is human, mouse and rat reactive. Three alternatively spliced transcript variants have been observed.
Form	Liquid
Purification	Peptide affinity purification
Concentration	1 mg/mL
Isotype	IgG
Recommend Usage	Western Blot (1-2 ug/mL) The optimal working dilution should be determined by the end user.

Storage Buffer	In PBS (0.05% sodium azide)
Storage Instruction	Store at 4°C for three months. For long term storage store at -20°C. Aliquot to avoid repeated freezing and thawing.
Note	This product contains sodium azide: a POISONOUS AND HAZARDOUS SUBSTANCE which should be handled by trained staff only.

Applications

- Western Blot (Cell lysate)

Western blot analysis of FMNL1 in EL4 cell lysate with FMNL1 polyclonal antibody (Cat # PAB25671) at 1 ug/mL.

- Enzyme-linked Immunoabsorbent Assay

Gene Info — FMNL1

Entrez GeneID	752
Protein Accession#	NP_005883
Gene Name	FMNL1
Gene Alias	C17orf1, C17orf1B, FHOD4, FMNL, KW-13, MGC133052, MGC1894, MGC21878
Gene Description	formin-like 1
Omim ID	604656
Gene Ontology	Hyperlink
Gene Summary	This gene encodes a formin-related protein. Formin-related proteins have been implicated in morphogenesis, cytokinesis, and cell polarity. An alternative splice variant has been described but its full length sequence has not been determined. [provided by RefSeq]
Other Designations	CLL-associated antigen KW-13 leukocyte formin