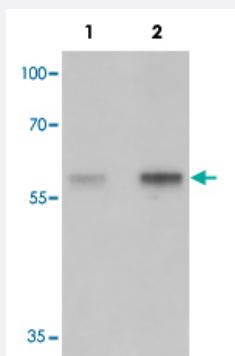


HEPACAM2 polyclonal antibody

Catalog # PAB25668

Size 100 ug

Applications



Western Blot (Tissue lysate)

Western blot analysis of HEPACAM2 in mouse brain tissue with HEPACAM2 polyclonal antibody (Cat # PAB25668) at (1) 0.5 ug/mL and (2) 1 ug/mL.

Specification

Product Description	Rabbit polyclonal antibody raised against synthetic peptide of HEPACAM2.
Immunogen	A synthetic peptide corresponding to 19 amino acids at C-terminus of human HEPACAM2.
Host	Rabbit
Theoretical MW (kDa)	51
Reactivity	Human, Mouse, Rat
Specificity	HEPACAM2 antibody is human, mouse and rat reactive. At least two isoforms of HEPACAM2 are known to exist; this antibody will detect both isoforms. HEPACAM2 antibody is predicted to not cross-react with HEPACAM.
Form	Liquid
Purification	Peptide affinity purification
Concentration	1 mg/mL
Isotype	IgG

Recommend Usage	Western Blot (0.5-1 ug/mL) The optimal working dilution should be determined by the end user.
Storage Buffer	In PBS (0.05% sodium azide)
Storage Instruction	Store at 4°C for three months. For long term storage store at -20°C. Aliquot to avoid repeated freezing and thawing.
Note	This product contains sodium azide: a POISONOUS AND HAZARDOUS SUBSTANCE which should be handled by trained staff only.

Applications

- Western Blot (Tissue lysate)

Western blot analysis of HEPACAM2 in mouse brain tissue with HEPACAM2 polyclonal antibody (Cat # PAB25668) at (1) 0.5 ug/mL and (2) 1 ug/mL.

- Enzyme-linked Immunoabsorbent Assay

Gene Info — HEPACAM2

Entrez GeneID	253012
Protein Accession#	NP_001034461
Gene Name	HEPACAM2
Gene Alias	-
Gene Description	HEPACAM family member 2
Gene Ontology	Hyperlink
Other Designations	-