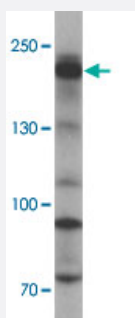


SHROOM3 polyclonal antibody

Catalog # PAB25666 Size 100 ug

Applications



Western Blot (Cell lysate)

Western blot analysis of SHROOM3 in SK-N-SH cell lysate with SHROOM3 polyclonal antibody (Cat # PAB25666) at 1 ug/mL.

Specification

Product Description	Rabbit polyclonal antibody raised against synthetic peptide of SHROOM3.
Immunogen	A synthetic peptide corresponding to 18 amino acids at internal region of human SHROOM3.
Host	Rabbit
Theoretical MW (kDa)	220
Reactivity	Human
Specificity	SHROOM3 antibody is human specific. At least four isoforms of SHROOM3 are known to exist; this antibody will detect all four isoforms. SHROOM3 antibody is predicted to not cross-react with other SHROOM family members.
Form	Liquid
Purification	Peptide affinity purification
Concentration	1 mg/mL
Isotype	IgG

Recommend Usage	Western Blot (1-2 ug/mL) The optimal working dilution should be determined by the end user.
Storage Buffer	In PBS (0.05% sodium azide)
Storage Instruction	Store at 4°C for three months. For long term storage store at -20°C. Aliquot to avoid repeated freezing and thawing.
Note	This product contains sodium azide: a POISONOUS AND HAZARDOUS SUBSTANCE which should be handled by trained staff only.

Applications

- Western Blot (Cell lysate)

Western blot analysis of SHROOM3 in SK-N-SH cell lysate with SHROOM3 polyclonal antibody (Cat # PAB25666) at 1 ug/mL.

- Enzyme-linked Immunoabsorbent Assay

Gene Info — SHROOM3

Entrez GeneID	57619
Protein Accession#	NP_065910
Gene Name	SHROOM3
Gene Alias	APXL3, KIAA1481, MSTP013, SHRM, ShrmL
Gene Description	shroom family member 3
Omim ID	604570
Gene Ontology	Hyperlink
Other Designations	F-actin-binding protein shroom family member 3 protein

Disease

- [Amyotrophic Lateral Sclerosis](#)
- [Genetic Predisposition to Disease](#)
- [Kidney Failure](#)

- [Tobacco Use Disorder](#)