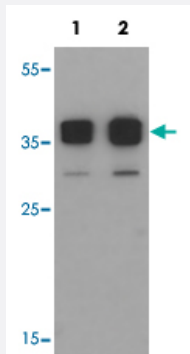


# TSPY1 polyclonal antibody

Catalog # PAB25665      Size 100 ug

## Applications



### Western Blot (Cell lysate)

Western blot analysis of TSPY1 in A-20 cell lysate with TSPY1 polyclonal antibody (Cat # PAB25665) at (1) 0.5 and (2) 1 ug/mL.

## Specification

<b>Product Description</b>	Rabbit polyclonal antibody raised against synthetic peptide of TSPY1.
<b>Immunogen</b>	A synthetic peptide corresponding to 20 amino acids at C-terminus of human TSPY1.
<b>Host</b>	Rabbit
<b>Theoretical MW (kDa)</b>	34
<b>Reactivity</b>	Human, Mouse
<b>Specificity</b>	TSPY1L antibody is human and mouse reactive. At least three isoforms of TSPY1 are known to exist; this antibody will detect only TSPY1L.
<b>Form</b>	Liquid
<b>Purification</b>	Peptide affinity purification
<b>Concentration</b>	1 mg/mL
<b>Isotype</b>	IgG

<b>Recommend Usage</b>	Western Blot (0.5-1 ug/mL) The optimal working dilution should be determined by the end user.
<b>Storage Buffer</b>	In PBS (0.05% sodium azide)
<b>Storage Instruction</b>	Store at 4°C for three months. For long term storage store at -20°C. Aliquot to avoid repeated freezing and thawing.
<b>Note</b>	This product contains sodium azide: a POISONOUS AND HAZARDOUS SUBSTANCE which should be handled by trained staff only.

## Applications

- Western Blot (Cell lysate)

Western blot analysis of TSPY1 in A-20 cell lysate with TSPY1 polyclonal antibody (Cat # PAB25665) at (1) 0.5 and (2) 1 ug/mL.

- Enzyme-linked Immunoabsorbent Assay

## Gene Info — TSPY1

<b>Entrez GeneID</b>	<a href="#">7258</a>
<b>Protein Accession#</b>	<a href="#">NP_003299</a>
<b>Gene Name</b>	TSPY1
<b>Gene Alias</b>	DYS14, TSPY, pJA923
<b>Gene Description</b>	testis specific protein, Y-linked 1
<b>Omim ID</b>	<a href="#">480100</a>
<b>Gene Ontology</b>	<a href="#">Hyperlink</a>
<b>Gene Summary</b>	O
<b>Other Designations</b>	-

## Disease

- [Infertility](#)