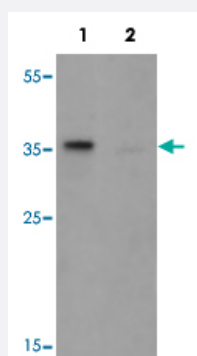


TSPY1 polyclonal antibody

Catalog # PAB25664 Size 100 ug

Applications



Western Blot (Cell lysate)

Western blot analysis of TSPY1 in A-20 cell lysate with TSPY1 polyclonal antibody (Cat # PAB25664) at 1 ug/mL in (1) the absence and (2) the presence of blocking peptide.

Specification

Product Description	Rabbit polyclonal antibody raised against synthetic peptide of TSPY1.
Immunogen	A synthetic peptide corresponding to 13 amino acids at C-terminus of human TSPY1.
Host	Rabbit
Theoretical MW (kDa)	32
Reactivity	Human, Mouse
Specificity	TSPY1S antibody is human and mouse reactive. At least three isoforms of TSPY1 are known to exist ; this antibody will detect only TSPY1S.
Form	Liquid
Purification	Peptide affinity purification
Concentration	1 mg/mL
Isotype	IgG

Recommend Usage	Western Blot (1-2 ug/mL) The optimal working dilution should be determined by the end user.
Storage Buffer	In PBS (0.05% sodium azide)
Storage Instruction	Store at 4°C for three months. For long term storage store at -20°C. Aliquot to avoid repeated freezing and thawing.
Note	This product contains sodium azide: a POISONOUS AND HAZARDOUS SUBSTANCE which should be handled by trained staff only.

Applications

- Western Blot (Cell lysate)

Western blot analysis of TSPY1 in A-20 cell lysate with TSPY1 polyclonal antibody (Cat # PAB25664) at 1 ug/mL in (1) the absence and (2) the presence of blocking peptide.

- Enzyme-linked Immunoabsorbent Assay

Gene Info — TSPY1

Entrez GeneID	7258
Protein Accession#	NP_001184171
Gene Name	TSPY1
Gene Alias	DYS14, TSPY, pJA923
Gene Description	testis specific protein, Y-linked 1
Omim ID	480100
Gene Ontology	Hyperlink
Gene Summary	O
Other Designations	-

Disease

- [Infertility](#)