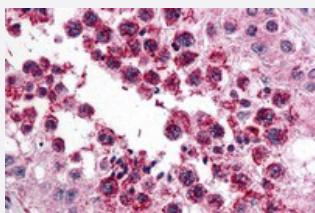


# SLAIN2 polyclonal antibody

Catalog # PAB25660      Size 100 ug

## Applications



### Immunohistochemistry

Immunohistochemical analysis of SLAIN2 in human testis tissue with SLAIN2 polyclonal antibody (Cat # PAB25660) at 5 ug/mL.

## Specification

<b>Product Description</b>	Rabbit polyclonal antibody raised against synthetic peptide of SLAIN2.
<b>Immunogen</b>	A synthetic peptide corresponding to 14 amino acids at N-terminus of human SLAIN2.
<b>Host</b>	Rabbit
<b>Theoretical MW (kDa)</b>	64
<b>Reactivity</b>	Human
<b>Specificity</b>	SLAIN2 antibody is predicted not to cross-react with SLAIN1.
<b>Form</b>	Liquid
<b>Purification</b>	Peptide affinity purification
<b>Concentration</b>	1 mg/mL
<b>Isotype</b>	IgG
<b>Recommend Usage</b>	Immunohistochemistry (5 ug/mL) The optimal working dilution should be determined by the end user.

Storage Buffer	In PBS (0.05% sodium azide)
Storage Instruction	Store at 4°C for three months. For long term storage store at -20°C. Aliquot to avoid repeated freezing and thawing.
Note	This product contains sodium azide: a POISONOUS AND HAZARDOUS SUBSTANCE which should be handled by trained staff only.

## Applications

- Immunohistochemistry

Immunohistochemical analysis of SLAIN2 in human testis tissue with SLAIN2 polyclonal antibody (Cat # PAB25660) at 5 ug/mL.

- Enzyme-linked Immunoabsorbent Assay

## Gene Info — SLAIN2

Entrez GeneID	<a href="#">57606</a>
Protein Accession#	<a href="#">AAH40993</a>
Gene Name	SLAIN2
Gene Alias	FLJ21611, KIAA1458
Gene Description	SLAIN motif family, member 2
Omim ID	<a href="#">610492</a>
Gene Ontology	<a href="#">Hyperlink</a>
Gene Summary	O
Other Designations	-

## Disease

- [HIV Infections](#)