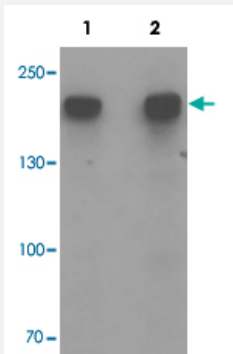


DDX60 polyclonal antibody

Catalog # PAB25655 Size 100 ug

Applications



Western Blot (Cell lysate)

Western blot analysis of DDX60 in A-20 cell lysate with DDX60 polyclonal antibody (Cat # PAB25655) at (1) 1 and (2) 2 ug/mL.

Specification

Product Description	Rabbit polyclonal antibody raised against synthetic peptide of DDX60.
Immunogen	A synthetic peptide corresponding to 17 amino acids at internal region of human DDX60.
Host	Rabbit
Theoretical MW (kDa)	188
Reactivity	Human, Mouse, Rat
Specificity	At least three isoforms of DDX60 are known to exist; this antibody will detect all three isoforms.
Form	Liquid
Purification	Peptide affinity purification
Concentration	1 mg/mL
Isotype	IgG
Recommend Usage	Western Blot (1-2 ug/mL) The optimal working dilution should be determined by the end user.

Storage Buffer	In PBS (0.05% sodium azide)
Storage Instruction	Store at 4°C for three months. For long term storage store at -20°C. Aliquot to avoid repeated freezing and thawing.
Note	This product contains sodium azide: a POISONOUS AND HAZARDOUS SUBSTANCE which should be handled by trained staff only.

Applications

- Western Blot (Cell lysate)

Western blot analysis of DDX60 in A-20 cell lysate with DDX60 polyclonal antibody (Cat # PAB25655) at (1) 1 and (2) 2 ug/mL.

- Enzyme-linked Immunoabsorbent Assay

Gene Info — DDX60

Entrez GeneID	55601
Protein Accession#	NP_060101
Gene Name	DDX60
Gene Alias	FLJ10787, FLJ20035
Gene Description	DEAD (Asp-Glu-Ala-Asp) box polypeptide 60
Gene Ontology	Hyperlink
Other Designations	-