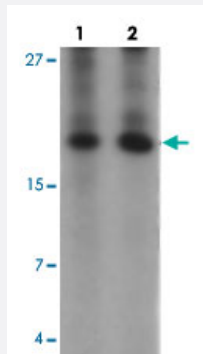


ANG polyclonal antibody

Catalog # PAB25645 Size 100 ug

Applications



Western Blot (Tissue lysate)

Western blot analysis of ANG in rat liver tissue with ANG polyclonal antibody (Cat # PAB25645) at (1) 1 and (2) 2 ug/mL.

Specification

Product Description	Rabbit polyclonal antibody raised against synthetic peptide of ANG.
Immunogen	A synthetic peptide corresponding to 15 amino acids at internal region of human ANG.
Host	Rabbit
Theoretical MW (kDa)	16
Reactivity	Human, Mouse, Rat
Specificity	Two alternatively spliced transcript variants have been observed.
Form	Liquid
Purification	Peptide affinity purification
Concentration	1 mg/mL
Isotype	IgG
Recommend Usage	Western Blot (1-2 ug/mL) The optimal working dilution should be determined by the end user.

Storage Buffer	In PBS (0.05% sodium azide)
Storage Instruction	Store at 4°C for three months. For long term storage store at -20°C. Aliquot to avoid repeated freezing and thawing.
Note	This product contains sodium azide: a POISONOUS AND HAZARDOUS SUBSTANCE which should be handled by trained staff only.

Applications

- Western Blot (Tissue lysate)

Western blot analysis of ANG in rat liver tissue with ANG polyclonal antibody (Cat # PAB25645) at (1) 1 and (2) 2 ug/mL.

- Enzyme-linked Immunoabsorbent Assay

Gene Info — ANG

Entrez GeneID	283
Protein Accession#	NP_001136
Gene Name	ANG
Gene Alias	ALS9, HEL168, MGC22466, MGC71966, RNASE4, RNASE5
Gene Description	angiogenin, ribonuclease, RNase A family, 5
Omim ID	105400 105850
Gene Ontology	Hyperlink
Gene Summary	The protein encoded by this gene is an exceedingly potent mediator of new blood vessel formation. It hydrolyzes cellular tRNAs resulting in decreased protein synthesis and is similar to pancreatic ribonuclease. Alternative splicing results in two transcript variants encoding the same protein. This gene and the gene that encodes ribonuclease, RNase A family, 4 share promoters and 5' exons. Each gene splices to a unique downstream exon that contains its complete coding region. [provided by RefSeq]
Other Designations	OTTHUMP00000164020 OTTHUMP00000164021 epididymis luminal protein 168

Disease

- [Amyotrophic lateral sclerosis](#)

- [Anoxia](#)
- [Chorioamnionitis](#)
- [Disease Susceptibility](#)
- [Fetal Membranes](#)
- [Genetic Predisposition to Disease](#)
- [Hypertension](#)
- [Hypertrophy](#)
- [Obstetric Labor](#)
- [Pre-Eclampsia](#)
- [Premature Birth](#)