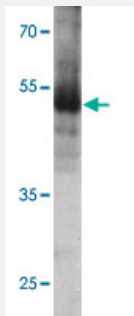


EED polyclonal antibody

Catalog # PAB25636 Size 100 ug

Applications



Western Blot (Tissue lysate)

Western blot analysis of EED in human heart tissue with EED polyclonal antibody (Cat # PAB25636) at 1 ug/mL.

Specification

Product Description	Rabbit polyclonal antibody raised against synthetic peptide of EED.
Immunogen	A synthetic peptide corresponding to 18 amino acids at N-terminus of human EED.
Host	Rabbit
Theoretical MW (kDa)	49
Reactivity	Human, Mouse, Rat
Specificity	Four alternatively spliced transcript variants have been observed.
Form	Liquid
Purification	Peptide affinity purification
Concentration	1 mg/mL
Isotype	IgG
Recommend Usage	Western Blot (1 ug/mL) The optimal working dilution should be determined by the end user.

Storage Buffer	In PBS (0.05% sodium azide)
Storage Instruction	Store at 4°C for three months. For long term storage store at -20°C. Aliquot to avoid repeated freezing and thawing.
Note	This product contains sodium azide: a POISONOUS AND HAZARDOUS SUBSTANCE which should be handled by trained staff only.

Applications

- Western Blot (Tissue lysate)

Western blot analysis of EED in human heart tissue with EED polyclonal antibody (Cat # PAB25636) at 1 ug/mL.

- Enzyme-linked Immunoabsorbent Assay

Gene Info — EED

Entrez GeneID	8726
Protein Accession#	NP_003788
Gene Name	EED
Gene Alias	HEED, WAIT1
Gene Description	embryonic ectoderm development
Omim ID	605984
Gene Ontology	Hyperlink
Gene Summary	This gene encodes a member of the Polycomb-group (PcG) family. PcG family members form multimeric protein complexes, which are involved in maintaining the transcriptional repressive state of genes over successive cell generations. This protein interacts with enhancer of zeste 2, the cytoplasmic tail of integrin beta7, immunodeficiency virus type 1 (HIV-1) MA protein, and histone deacetylase proteins. This protein mediates repression of gene activity through histone deacetylation, and may act as a specific regulator of integrin function. Two transcript variants encoding distinct isoforms have been identified for this gene. [provided by RefSeq]
Other Designations	WD protein associating with integrin cytoplasmic tails 1