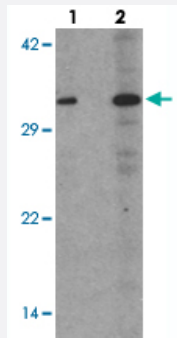


CDKN1C polyclonal antibody

Catalog # PAB25634 Size 100 ug

Applications



Western Blot (Cell lysate)

Western blot analysis of CDKN1C in 293 cell lysate with CDKN1C polyclonal antibody (Cat # PAB25634) at (1) 1 and (2) 2 ug/mL.

Specification

Product Description	Rabbit polyclonal antibody raised against synthetic peptide of CDKN1C.
Immunogen	A synthetic peptide corresponding to 17 amino acids at N-terminus of human CDKN1C.
Host	Rabbit
Theoretical MW (kDa)	35
Reactivity	Human
Specificity	At least three isoforms of CDKN1C are known to exist; this antibody will detect all three isoforms. Despite its predicted molecular weight, CDKN1C often migrates at 57kDa in SDS-PAGE. CDKN1C antibody is predicted to not cross react with other CIP/KIP proteins.
Form	Liquid
Purification	Peptide affinity purification
Concentration	1 mg/mL
Isotype	IgG

Recommend Usage	Western Blot (1-2 ug/mL) The optimal working dilution should be determined by the end user.
Storage Buffer	In PBS (0.05% sodium azide)
Storage Instruction	Store at 4°C for three months. For long term storage store at -20°C. Aliquot to avoid repeated freezing and thawing.
Note	This product contains sodium azide: a POISONOUS AND HAZARDOUS SUBSTANCE which should be handled by trained staff only.

Applications

- Western Blot (Cell lysate)

Western blot analysis of CDKN1C in 293 cell lysate with CDKN1C polyclonal antibody (Cat # PAB25634) at (1) 1 and (2) 2 ug/mL.

- Enzyme-linked Immunoabsorbent Assay

Gene Info — CDKN1C

Entrez GeneID	1028
Protein Accession#	NP_000067
Gene Name	CDKN1C
Gene Alias	BWCR, BWS, KIP2, WBS, p57
Gene Description	cyclin-dependent kinase inhibitor 1C (p57, Kip2)
Omim ID	130650 600856
Gene Ontology	Hyperlink
Gene Summary	The protein encoded by this gene is a tight-binding, strong inhibitor of several G1 cyclin/Cdk complexes and a negative regulator of cell proliferation. Mutations in this gene are implicated in sporadic cancers and Beckwith-Wiedemann syndrome, suggesting that this gene is a tumor suppressor candidate. Three transcript variants encoding two different isoforms have been found for this gene. [provided by RefSeq]
Other Designations	OTTHUMP00000011736 cyclin-dependent kinase inhibitor 1C

Pathway

- [Cell cycle](#)

Disease

- [Atherosclerosis](#)
- [Birth Weight](#)
- [Cleft Lip](#)
- [Cleft Palate](#)
- [Diabetes Mellitus](#)
- [Genetic Predisposition to Disease](#)
- [Lung Neoplasms](#)
- [Multiple endocrine neoplasia](#)
- [Multiple Endocrine Neoplasia Type 1](#)
- [Myocardial Infarction](#)
- [Neoplasms](#)
- [Ovarian cancer](#)
- [Ovarian Neoplasms](#)
- [Pulmonary Disease](#)
- [Urinary Bladder Neoplasms](#)
- [Werner syndrome](#)