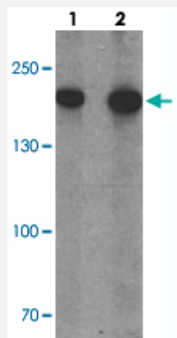


# PHLPP1 polyclonal antibody

Catalog # PAB25632      Size 100 ug

## Applications



### Western Blot (Cell lysate)

Western blot analysis of PHLPP1 in SW480 cell lysate with PHLPP1 polyclonal antibody (Cat # PAB25632) at (1) 1 and (2) 2 ug/mL.

## Specification

<b>Product Description</b>	Rabbit polyclonal antibody raised against synthetic peptide of PHLPP1.
<b>Immunogen</b>	A synthetic peptide corresponding to 18 amino acids at N-terminus of human PHLPP1.
<b>Host</b>	Rabbit
<b>Theoretical MW (kDa)</b>	189
<b>Reactivity</b>	Human
<b>Specificity</b>	At least four isoforms are known to exist; this antibody will only detect the largest isoform. PHLPP1 antibody is predicted to not cross react with PHLPP2.
<b>Form</b>	Liquid
<b>Purification</b>	Peptide affinity purification
<b>Concentration</b>	1 mg/mL
<b>Isotype</b>	IgG
<b>Recommend Usage</b>	Western Blot (1-2 ug/mL) The optimal working dilution should be determined by the end user.

Storage Buffer	In PBS (0.05% sodium azide)
Storage Instruction	Store at 4°C for three months. For long term storage store at -20°C. Aliquot to avoid repeated freezing and thawing.
Note	This product contains sodium azide: a POISONOUS AND HAZARDOUS SUBSTANCE which should be handled by trained staff only.

## Applications

- Western Blot (Cell lysate)

Western blot analysis of PHLPP1 in SW480 cell lysate with PHLPP1 polyclonal antibody (Cat # PAB25632) at (1) 1 and (2) 2 ug/mL.

- Enzyme-linked Immunoabsorbent Assay

## Gene Info — PHLPP1

Entrez GeneID	<a href="#">23239</a>
Protein Accession#	<a href="#">NP_919431</a>
Gene Name	PHLPP1
Gene Alias	MGC161555, PHLPP1, PLEKHE1, SCOP, PHLPP
Gene Description	PH domain and leucine rich repeat protein phosphatase 1
Omim ID	<a href="#">609396</a>
Gene Ontology	<a href="#">Hyperlink</a>
Gene Summary	family E (with leucine rich repeats) member 1; suprachiasmatic nucleus circad
Other Designations	PH domain leucine-rich repeat-containing protein phosphatase 1; PH domain-containing family E member 1; SCN circadian oscillatory protein; pleckstrin homology domain containing, family E (with leucine rich repeats) member 1; suprachiasmatic nucleus circad

## Disease

- [Genetic Predisposition to Disease](#)
- [Narcolepsy](#)

- [Tobacco Use Disorder](#)