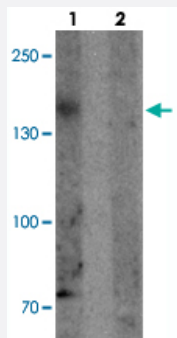


PHLPP2 polyclonal antibody

Catalog # PAB25631 Size 100 ug

Applications



Western Blot (Cell lysate)

Western blot analysis of PHLPP2 in SW480 cell lysate with PHLPP2 polyclonal antibody (Cat # PAB25631) at 1 ug/mL in (1) the presence and (2) the absence of blocking peptide.

Specification

Product Description	Rabbit polyclonal antibody raised against synthetic peptide of PHLPP2.
Immunogen	A synthetic peptide corresponding to 20 amino acids at C-terminus of human PHLPP2.
Host	Rabbit
Theoretical MW (kDa)	156
Reactivity	Human
Specificity	At least three isoforms are known to exist; this antibody will detect the two largest isoforms. PHLPP2 antibody is predicted to not cross react with PHLPP1.
Form	Liquid
Purification	Peptide affinity purification
Concentration	1 mg/mL
Isotype	IgG
Recommend Usage	Western Blot (1 ug/mL) The optimal working dilution should be determined by the end user.

Storage Buffer	In PBS (0.05% sodium azide)
Storage Instruction	Store at 4°C for three months. For long term storage store at -20°C. Aliquot to avoid repeated freezing and thawing.
Note	This product contains sodium azide: a POISONOUS AND HAZARDOUS SUBSTANCE which should be handled by trained staff only.

Applications

- Western Blot (Cell lysate)

Western blot analysis of PHLPP2 in SW480 cell lysate with PHLPP2 polyclonal antibody (Cat # PAB25631) at 1 ug/mL in (1) the presence and (2) the absence of blocking peptide.

- Enzyme-linked Immunoabsorbent Assay

Gene Info — PHLPP2

Entrez GeneID	23035
Protein Accession#	NP_055835
Gene Name	PHLPP2
Gene Alias	KIAA0931, PHLPP2
Gene Description	PH domain leucine-rich repeat-containing protein phosphatase 2
Omim ID	611066
Gene Ontology	Hyperlink
Other Designations	-

Disease

- [Tobacco Use Disorder](#)