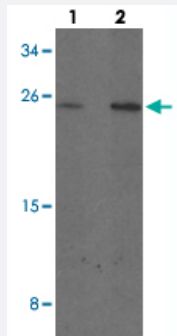


MYCT1 polyclonal antibody

Catalog # PAB25626 Size 100 ug

Applications



Western Blot (Tissue lysate)

Western blot analysis of MYCT1 in rat lung tissue with MYCT1 polyclonal antibody (Cat # PAB25626) at (1) 1 and (2) 2 ug/mL.

Specification

Product Description	Rabbit polyclonal antibody raised against synthetic peptide of MYCT1.
Immunogen	A synthetic peptide corresponding to 17 amino acids at C-terminus of human MYCT1.
Host	Rabbit
Theoretical MW (kDa)	26
Reactivity	Human, Mouse, Rat
Specificity	At least two isoforms of MYCT1 are known to exist; this antibody will detect both isoforms.
Form	Liquid
Purification	Peptide affinity purification
Concentration	1 mg/mL
Isotype	IgG
Recommend Usage	Western Blot (1-2 ug/mL) The optimal working dilution should be determined by the end user.

Storage Buffer	In PBS (0.05% sodium azide)
Storage Instruction	Store at 4°C for three months. For long term storage store at -20°C. Aliquot to avoid repeated freezing and thawing.
Note	This product contains sodium azide: a POISONOUS AND HAZARDOUS SUBSTANCE which should be handled by trained staff only.

Applications

- Western Blot (Tissue lysate)

Western blot analysis of MYCT1 in rat lung tissue with MYCT1 polyclonal antibody (Cat # PAB25626) at (1) 1 and (2) 2 ug/mL.

- Enzyme-linked Immunoabsorbent Assay

Gene Info — MYCT1

Entrez GeneID	80177
Protein Accession#	NP_079383
Gene Name	MYCT1
Gene Alias	FLJ21269, MGC156309, MGC156310, MTLC
Gene Description	myc target 1
Gene Ontology	Hyperlink
Other Designations	OTTHUMP00000017449 myc target in myeloid cells 1

Disease

- [Kidney Failure](#)