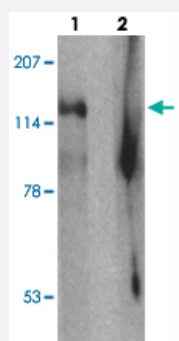


SGSM2 polyclonal antibody

Catalog # PAB25624 Size 100 ug

Applications



Western Blot (Tissue lysate)

Western blot analysis of SGSM2 in human cerebellum tissue with SGSM2 polyclonal antibody (Cat # PAB25624) at 1 ug/mL in (1) the absence and (2) the presence of blocking peptide.

Specification

Product Description	Rabbit polyclonal antibody raised against synthetic peptide of SGSM2.
Immunogen	A synthetic peptide corresponding to 18 amino acids at internal region of human SGSM2.
Host	Rabbit
Theoretical MW (kDa)	116
Reactivity	Human, Mouse, Rat
Specificity	Multiple isoforms of SGSM2 are known to exist. SGSM2 antibody is predicted to not cross react with other SGSM family proteins.
Form	Liquid
Purification	Peptide affinity purification
Concentration	1 mg/mL
Isotype	IgG
Recommend Usage	Western Blot (1 ug/mL) The optimal working dilution should be determined by the end user.

Storage Buffer	In PBS (0.05% sodium azide)
Storage Instruction	Store at 4°C for three months. For long term storage store at -20°C. Aliquot to avoid repeated freezing and thawing.
Note	This product contains sodium azide: a POISONOUS AND HAZARDOUS SUBSTANCE which should be handled by trained staff only.

Applications

- Western Blot (Tissue lysate)

Western blot analysis of SGSM2 in human cerebellum tissue with SGSM2 polyclonal antibody (Cat # PAB25624) at 1 ug/mL in (1) the absence and (2) the presence of blocking peptide.

- Enzyme-linked Immunoabsorbent Assay

Gene Info — SGSM2

Entrez GeneID	9905
Protein Accession#	NP_055668
Gene Name	SGSM2
Gene Alias	KIAA0397, RUTBC1
Gene Description	small G protein signaling modulator 2
Omim ID	611418
Gene Ontology	Hyperlink
Other Designations	RUN and TBC1 domain containing 1 small G protein signaling modulator 2 protein