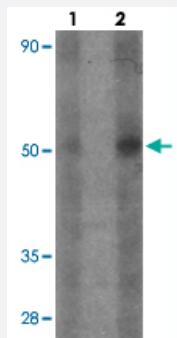


ATG14 polyclonal antibody

Catalog # PAB25621 Size 100 ug

Applications



Western Blot (Tissue lysate)

Western blot analysis of ATG14 in human small intestine tissue with ATG14 polyclonal antibody (Cat # PAB25621) at (1) 1 and (2) 2 ug/mL.

Specification

| | |
|-----------------------------|--|
| Product Description | Rabbit polyclonal antibody raised against synthetic peptide of ATG14. |
| Immunogen | A synthetic peptide corresponding to 18 amino acids at internal region of human ATG14. |
| Host | Rabbit |
| Theoretical MW (kDa) | 54 |
| Reactivity | Human, Mouse, Rat |
| Specificity | At least three isoforms of ATG14 are known to exist; this antibody will detect all three isoforms. |
| Form | Liquid |
| Purification | Peptide affinity purification |
| Concentration | 1 mg/mL |
| Isotype | IgG |
| Recommend Usage | Western Blot (1-2 ug/mL) The optimal working dilution should be determined by the end user. |

| | |
|---------------------|---|
| Storage Buffer | In PBS (0.05% sodium azide) |
| Storage Instruction | Store at 4°C for three months. For long term storage store at -20°C. Aliquot to avoid repeated freezing and thawing. |
| Note | This product contains sodium azide: a POISONOUS AND HAZARDOUS SUBSTANCE which should be handled by trained staff only. |

Applications

- Western Blot (Tissue lysate)

Western blot analysis of ATG14 in human small intestine tissue with ATG14 polyclonal antibody (Cat # PAB25621) at (1) 1 and (2) 2 ug/mL.

- Enzyme-linked Immunoabsorbent Assay

Gene Info — ATG14

| | |
|--------------------|---|
| Entrez GeneID | 22863 |
| Protein Accession# | NP_055739 |
| Gene Name | ATG14 |
| Gene Alias | MGC126291, MGC126292 |
| Gene Description | autophagy related 14 |
| Gene Ontology | Hyperlink |
| Other Designations | ATG14 autophagy related 14 homolog Beclin 1-Interacting protein autophagy-related protein 14-like protein beclin 1-associated autophagy-related key regulator |