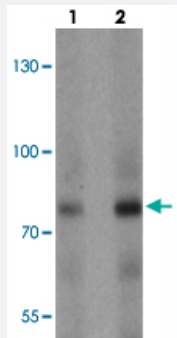


KEAP1 polyclonal antibody

Catalog # PAB25620 Size 100 ug

Applications



Western Blot (Tissue lysate)

Western blot analysis of KEAP1 in human lung tissue with KEAP1 polyclonal antibody (Cat # PAB25620) at (1) 1 and (2) 2 ug/mL.

Specification

Product Description	Rabbit polyclonal antibody raised against synthetic peptide of KEAP1.
Immunogen	A synthetic peptide corresponding to 19 amino acids at C-terminus of human KEAP1.
Host	Rabbit
Theoretical MW (kDa)	69
Reactivity	Human, Mouse, Rat
Specificity	At least two isoforms of KEAP1 are known to exist.
Form	Liquid
Purification	Peptide affinity purification
Concentration	1 mg/mL
Isotype	IgG
Recommend Usage	Western Blot (1-2 ug/mL) The optimal working dilution should be determined by the end user.

Storage Buffer	In PBS (0.05% sodium azide)
Storage Instruction	Store at 4°C for three months. For long term storage store at -20°C. Aliquot to avoid repeated freezing and thawing.
Note	This product contains sodium azide: a POISONOUS AND HAZARDOUS SUBSTANCE which should be handled by trained staff only.

Applications

- Western Blot (Tissue lysate)

Western blot analysis of KEAP1 in human lung tissue with KEAP1 polyclonal antibody (Cat # PAB25620) at (1) 1 and (2) 2 ug/mL.

- Enzyme-linked Immunoabsorbent Assay

Gene Info — KEAP1

Entrez GeneID	9817
Protein Accession#	NP_987096
Gene Name	KEAP1
Gene Alias	INrf2, KIAA0132, KLHL19, MGC10630, MGC1114, MGC20887, MGC4407, MGC9454
Gene Description	kelch-like ECH-associated protein 1
Omim ID	606016
Gene Ontology	Hyperlink
Gene Summary	This gene encodes a protein containing KELCH-1 like domains, as well as a BTB/POZ domain. Kelch-like ECH-associated protein 1 interacts with NF-E2-related factor 2 in a redox-sensitive manner and the dissociation of the proteins in the cytoplasm is followed by transportation of NF-E2-related factor 2 to the nucleus. This interaction results in the expression of the catalytic subunit of gamma-glutamylcysteine synthetase. Two alternatively spliced transcript variants encoding the same isoform have been found for this gene. [provided by RefSeq]
Other Designations	cytosolic inhibitor of Nrf2

Publication Reference

- [Dried plum and chokeberry ameliorate d-galactose-induced aging in mice by regulation of PI3k/Akt-mediated Nrf2 and Nf-kB pathways.](#)

Jeong H, Liu Y, Kim HS.

Experimental Gerontology 2017 May; 95:16.

Application: WB-Ti, Mouse, Mouse liver

Pathway

- [Ubiquitin mediated proteolysis](#)

Disease

- [Alzheimer Disease](#)
- [Carcinoma](#)
- [Cataract](#)
- [Disease Progression](#)
- [Esophageal Neoplasms](#)
- [Genetic Predisposition to Disease](#)
- [Lung Neoplasms](#)
- [Parkinson Disease](#)
- [Pulmonary Disease](#)
- [Skin Neoplasms](#)