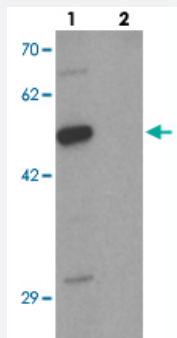


# DCP2 polyclonal antibody

Catalog # PAB25619      Size 100 ug

## Applications



### Western Blot (Cell lysate)

Western blot analysis of DCP2 in 293 cell lysate with DCP2 polyclonal antibody (Cat # PAB25619) at 1 ug/mL in (1) the absence and (2) the presence of blocking peptide.

## Specification

<b>Product Description</b>	Rabbit polyclonal antibody raised against synthetic peptide of DCP2.
<b>Immunogen</b>	A synthetic peptide corresponding to 18 amino acids at C-terminus of human DCP2.
<b>Host</b>	Rabbit
<b>Theoretical MW (kDa)</b>	46
<b>Reactivity</b>	Human, Mouse, Rat
<b>Specificity</b>	Multiple isoforms of DCP2 are known to exist.
<b>Form</b>	Liquid
<b>Purification</b>	Peptide affinity purification
<b>Concentration</b>	1 mg/mL
<b>Isotype</b>	IgG
<b>Recommend Usage</b>	Western Blot (1 ug/mL) The optimal working dilution should be determined by the end user.

Storage Buffer	In PBS (0.05% sodium azide)
Storage Instruction	Store at 4°C for three months. For long term storage store at -20°C. Aliquot to avoid repeated freezing and thawing.
Note	This product contains sodium azide: a POISONOUS AND HAZARDOUS SUBSTANCE which should be handled by trained staff only.

## Applications

- Western Blot (Cell lysate)

Western blot analysis of DCP2 in 293 cell lysate with DCP2 polyclonal antibody (Cat # PAB25619) at 1 ug/mL in (1) the absence and (2) the presence of blocking peptide.

- Enzyme-linked Immunoabsorbent Assay

## Gene Info — DCP2

Entrez GeneID	<a href="#">167227</a>
Protein Accession#	<a href="#">NP_689837</a>
Gene Name	DCP2
Gene Alias	FLJ33245, NUDT20
Gene Description	DCP2 decapping enzyme homolog (S. cerevisiae)
Omim ID	<a href="#">609844</a>
Gene Ontology	<a href="#">Hyperlink</a>
Gene Summary	DCP2 is a key component of an mRNA-decapping complex required for removal of the 5-prime cap from mRNA prior to its degradation from the 5-prime end (Fenger-Gron et al., 2005 [PubMed 16364915]).[supplied by OMIM]
Other Designations	DCP2 decapping enzyme nudix (nucleoside diphosphate linked moiety X)-type motif 20

## Pathway

- [RNA degradation](#)