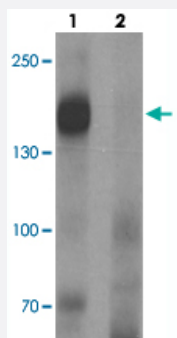


# LNPEP polyclonal antibody

Catalog # PAB25616      Size 100 ug

## Applications



### Western Blot (Tissue lysate)

Western blot analysis of LNPEP in human lung tissue with LNPEP polyclonal antibody (Cat # PAB25616) at 1 ug/mL in (1) the absence and (2) the presence of blocking peptide.

## Specification

<b>Product Description</b>	Rabbit polyclonal antibody raised against synthetic peptide of LNPEP.
<b>Immunogen</b>	A synthetic peptide corresponding to 15 amino acids at C-terminus of human LNPEP.
<b>Host</b>	Rabbit
<b>Theoretical MW (kDa)</b>	113
<b>Reactivity</b>	Human
<b>Specificity</b>	At least three isoforms are known to exist; this antibody will detect all three isoforms. Despite its predicted molecular weight, LNPEP often migrates at 165kD in SDS-PAGE.
<b>Form</b>	Liquid
<b>Purification</b>	Peptide affinity purification
<b>Concentration</b>	1 mg/mL
<b>Isotype</b>	IgG
<b>Recommend Usage</b>	Western Blot (1 ug/mL) The optimal working dilution should be determined by the end user.

<b>Storage Buffer</b>	In PBS (0.05% sodium azide)
<b>Storage Instruction</b>	Store at 4°C for three months. For long term storage store at -20°C. Aliquot to avoid repeated freezing and thawing.
<b>Note</b>	This product contains sodium azide: a POISONOUS AND HAZARDOUS SUBSTANCE which should be handled by trained staff only.

## Applications

- Western Blot (Tissue lysate)

Western blot analysis of LNPEP in human lung tissue with LNPEP polyclonal antibody (Cat # PAB25616) at 1 ug/mL in (1) the absence and (2) the presence of blocking peptide.

- Enzyme-linked Immunoabsorbent Assay

## Gene Info — LNPEP

<b>Entrez GeneID</b>	<a href="#">4012</a>
<b>Protein Accession#</b>	<a href="#">NP_005566</a>
<b>Gene Name</b>	LNPEP
<b>Gene Alias</b>	CAP, IRAP, P-LAP, PLAP
<b>Gene Description</b>	leucyl/cystinyl aminopeptidase
<b>Omim ID</b>	<a href="#">151300</a>
<b>Gene Ontology</b>	<a href="#">Hyperlink</a>

<b>Gene Summary</b>	This gene encodes a zinc-dependent aminopeptidase that cleaves vasopressin, oxytocin, lys-bradykinin, met-enkephalin, dynorphin A and other peptide hormones. The protein can be secreted in maternal serum, reside in intracellular vesicles with the insulin-responsive glucose transporter GLUT4, or form a type II integral membrane glycoprotein. The protein catalyzes the final step in the conversion of angiotensinogen to angiotensin IV (AT4) and is also a receptor for AT4. Alternative splicing results in multiple transcript variants encoding different isoforms. [provided by RefSeq]
<b>Other Designations</b>	AT (4) receptor OTTHUMP00000196800 angiotensin IV receptor insulin-regulated aminopeptidase insulin-responsive aminopeptidase otase oxytocinase placental leucine aminopeptidase vasopressinase

## Pathway

- [Renin-angiotensin system](#)

## Disease

- [Hypertension](#)
- [Pre-Eclampsia](#)
- [Pregnancy Complications](#)