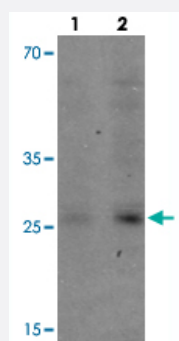


# VNN3 polyclonal antibody

Catalog # PAB25615      Size 100 ug

## Applications



### Western Blot (Tissue lysate)

Western blot analysis of VNN3 in human brain tissue with VNN3 polyclonal antibody (Cat # PAB25615) at (1) 0.5 and (2) 1 ug/mL.

## Specification

<b>Product Description</b>	Rabbit polyclonal antibody raised against synthetic peptide of VNN3.
<b>Immunogen</b>	A synthetic peptide corresponding to 19 amino acids at C-terminus of human VNN3.
<b>Host</b>	Rabbit
<b>Theoretical MW (kDa)</b>	55
<b>Reactivity</b>	Human, Mouse, Rat
<b>Specificity</b>	Multiple isoforms of VNN3 are known to exist.
<b>Form</b>	Liquid
<b>Purification</b>	Peptide affinity purification
<b>Concentration</b>	1 mg/mL
<b>Isotype</b>	IgG
<b>Recommend Usage</b>	Western Blot (0.5-1 ug/mL) The optimal working dilution should be determined by the end user.

Storage Buffer	In PBS (0.05% sodium azide)
Storage Instruction	Store at 4°C for three months. For long term storage store at -20°C. Aliquot to avoid repeated freezing and thawing.
Note	This product contains sodium azide: a POISONOUS AND HAZARDOUS SUBSTANCE which should be handled by trained staff only.

## Applications

- Western Blot (Tissue lysate)

Western blot analysis of VNN3 in human brain tissue with VNN3 polyclonal antibody (Cat # PAB25615) at (1) 0.5 and (2) 1 ug/mL.

- Enzyme-linked Immunoabsorbent Assay

## Gene Info — VNN3

Entrez GeneID	<a href="#">55350</a>
Protein Accession#	<a href="#">Q9NY84</a>
Gene Name	VNN3
Gene Alias	HSA238982, MGC171203, PAGEL-beta, PAGEL-eta, PAGEL-zeta
Gene Description	vanin 3
Omim ID	<a href="#">606592</a>
Gene Ontology	<a href="#">Hyperlink</a>
Gene Summary	This gene is the central gene in a cluster of three vanin genes on chromosome 6q23-q24. The open reading frame is disrupted by a frameshift, and all splice variants that have been described are candidates for nonsense-mediated decay (NMD). Consequently, it is unlikely that this gene expresses a protein in vivo, so it is classified as a pseudogene. Extensive alternative splicing has been described; the two most common variants are represented as RefSeqs. [provided by RefSeq]
Other Designations	PAGEL-alpha PAGEL-delta PAGEL-epsilon PAGEL-gamma pantetheinase pantetheinase-associated gene expressed in leukocytes (PAGEL)-alpha vanin 3, isoform 3