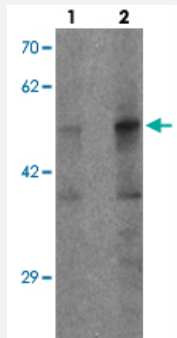


PLA1A polyclonal antibody

Catalog # PAB25614 Size 100 ug

Applications



Western Blot (Tissue lysate)

Western blot analysis of PLA1A in human kidney tissue with PLA1A polyclonal antibody (Cat # PAB25614) at (1) 1 and (2) 2 ug/mL.

Specification

Product Description	Rabbit polyclonal antibody raised against synthetic peptide of PLA1A.
Immunogen	A synthetic peptide corresponding to 17 amino acids at C-terminus of human PLA1A.
Host	Rabbit
Theoretical MW (kDa)	50
Reactivity	Human, Rat
Specificity	At least three isoforms of PLA1A are known to exist; this antibody will detect all three isoforms.
Form	Liquid
Purification	Peptide affinity purification
Concentration	1 mg/mL
Isotype	IgG
Recommend Usage	Western Blot (1-2 ug/mL) The optimal working dilution should be determined by the end user.

Storage Buffer	In PBS (0.05% sodium azide)
Storage Instruction	Store at 4°C for three months. For long term storage store at -20°C. Aliquot to avoid repeated freezing and thawing.
Note	This product contains sodium azide: a POISONOUS AND HAZARDOUS SUBSTANCE which should be handled by trained staff only.

Applications

- Western Blot (Tissue lysate)

Western blot analysis of PLA1A in human kidney tissue with PLA1A polyclonal antibody (Cat # PAB25614) at (1) 1 and (2) 2 ug/mL.

- Enzyme-linked Immunoabsorbent Assay

Gene Info — PLA1A

Entrez GeneID	51365
Protein Accession#	NP_056984
Gene Name	PLA1A
Gene Alias	PS-PLA1, PSPLA1
Gene Description	phospholipase A1 member A
Omim ID	607460
Gene Ontology	Hyperlink
Gene Summary	Phosphatidylserine-specific phospholipase A1-alpha (PLA1A) acts specifically on phosphatidylserine (PS) and 1-acyl-2-lysophosphatidylserine (lyso-PS) to hydrolyze fatty acids at the sn-1 position of these phospholipids.[supplied by OMIM]
Other Designations	phosphatidylserine-specific phospholipase A1alpha

Pathway

- [Tropane](#)

Disease

- [Cardiovascular Diseases](#)
- [Diabetes Mellitus](#)
- [Edema](#)