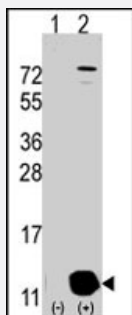


PHPT1 polyclonal antibody

Catalog # PAB2561

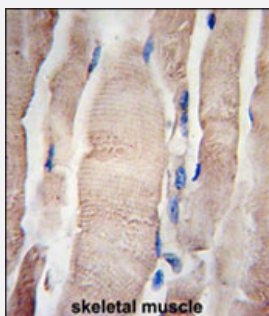
Size 400 uL

Applications



Western Blot (Transfected lysate)

Western blot analysis of PHPT1 (arrow) using rabbit PHPT1 polyclonal antibody (Cat # PAB2561). 293 cell lysates (2 ug/lane) either nontransfected (Lane 1) or transiently transfected with the PHPT1 gene (Lane 2) (Origene Technologies).



Immunohistochemistry (Formalin/PFA-fixed paraffin-embedded sections)

Formalin-fixed and paraffin-embedded human skeletal muscle tissue reacted with PHPT1 polyclonal antibody (Cat # PAB2561), which was peroxidase-conjugated to the secondary antibody, followed by DAB staining. This data demonstrates the use of this antibody for immunohistochemistry; clinical relevance has not been evaluated.

Specification

Product Description	Rabbit polyclonal antibody raised against synthetic peptide of PHPT1.
Immunogen	A synthetic peptide (conjugated with KLH) corresponding to C-terminus of human PHPT1.
Host	Rabbit
Reactivity	Human
Form	Liquid
Purification	Protein A purification

Recommend Usage	Western Blot (1:1000) Immunohistochemistry (1:10-50) The optimal working dilution should be determined by the end user.
Storage Buffer	In PBS (0.09% sodium azide)
Storage Instruction	Store at 4°C. For long term storage store at -20°C. Aliquot to avoid repeated freezing and thawing.
Note	This product contains sodium azide: a POISONOUS AND HAZARDOUS SUBSTANCE which should be handled by trained staff only.

Applications

- Western Blot (Transfected lysate)

Western blot analysis of PHPT1 (arrow) using rabbit PHPT1 polyclonal antibody (Cat # PAB2561). 293 cell lysates (2 ug/lane) either nontransfected (Lane 1) or transiently transfected with the PHPT1 gene (Lane 2) (Origene Technologies).

- Immunohistochemistry (Formalin/PFA-fixed paraffin-embedded sections)

Formalin-fixed and paraffin-embedded human skeletal muscle tissue reacted with PHPT1 polyclonal antibody (Cat # PAB2561), which was peroxidase-conjugated to the secondary antibody, followed by DAB staining. This data demonstrates the use of this antibody for immunohistochemistry; clinical relevance has not been evaluated.

Gene Info — PHPT1

Entrez GeneID	29085
GeneBank Accession#	NM_014172; Q9NRX4
Gene Name	PHPT1
Gene Alias	CGI-202, DKFZp564M173, HSPC141, PHP14, bA216L13.10
Gene Description	phosphohistidine phosphatase 1
Omim ID	610167
Gene Ontology	Hyperlink
Gene Summary	PHPT1 is an EDTA-insensitive phosphohistidine phosphatase that catalyzes the dephosphorylation of phosphopeptide I (Ek et al., 2002 [PubMed 12383260]).[supplied by OMIM]
Other Designations	1700008C22Rik OTTHUMP00000022619 phosphohistidine phosphatase 14kDa sex-regulated protein janus-a

Publication Reference

- [A protein-protein interaction network for human inherited ataxias and disorders of Purkinje cell degeneration.](#)

Lim J, Hao T, Shaw C, Patel AJ, Szabo G, Rual JF, Fisk CJ, Li N, Smolyar A, Hill DE, Barabasi AL, Vidal M, Zoghbi HY.

Cell 2006 May; 125(4):801.

- [The LIFEdb database in 2006.](#)

Mehrle A, Rosenfelder H, Schupp I, del Val C, Arlt D, Hahne F, Bechtel S, Simpson J, Hofmann O, Hide W, Glatting KH, Huber W, Pepperkok R, Poustka A, Wiemann S.

Nucleic Acids Research 2006 Jan; 34:D415.

- [Mutational study of human phosphohistidine phosphatase: effect on enzymatic activity.](#)

Ma R, Kanders E, Sundh UB, Geng M, Ek P, Zetterqvist O, Li JP.

Biochemical and Biophysical Research Communications 2005 Nov; 337(3):887.

Application: WB-Re, Recombinant protein

Pathway

- [Fructose and mannose metabolism](#)
- [Metabolic pathways](#)
- [Riboflavin metabolism](#)
- [Thiamine metabolism](#)