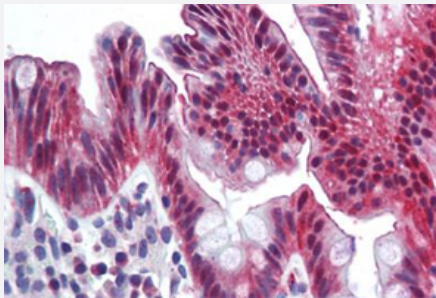


CEACAM1 polyclonal antibody

Catalog # PAB25597

Size 50 ug

Applications



Immunohistochemistry (Formalin/PFA-fixed paraffin-embedded sections)

Immunohistochemical staining of formalin-fixed, paraffin-embedded human colon tissue after heat-induced antigen retrieval.
Using CEACAM1 polyclonal antibody (Cat # PAB25597).

Specification

Product Description	Rabbit polyclonal antibody raised against synthetic peptide of CEACAM1.
Immunogen	A synthetic peptide corresponding to 13 amino acids at internal region of human CEACAM1.
Host	Rabbit
Reactivity	Human
Specificity	BLAST analysis of the peptide immunogen showed no homology with other human proteins.
Form	Liquid
Purification	Immunoaffinity chromatography
Recommend Usage	Immunohistochemistry (Formalin/PFA-fixed paraffin-embedded sections) (5 ug/mL) The optimal working dilution should be determined by the end user.
Storage Buffer	In PBS (0.09% sodium azide)
Storage Instruction	Store at 4°C. For long term storage store at -80°C. Aliquot to avoid repeated freezing and thawing.

Note

This product contains sodium azide: a POISONOUS AND HAZARDOUS SUBSTANCE which should be handled by trained staff only.

Applications

- Immunohistochemistry (Formalin/PFA-fixed paraffin-embedded sections)

Immunohistochemical staining of formalin-fixed, paraffin-embedded human colon tissue after heat-induced antigen retrieval. Using CEACAM1 polyclonal antibody (Cat # PAB25597).

Gene Info — CEACAM1

Entrez GeneID [634](#)

Gene Name CEACAM1

Gene Alias BGP, BGP1, BGPI

Gene Description carcinoembryonic antigen-related cell adhesion molecule 1 (biliary glycoprotein)

Omim ID [109770](#)

Gene Ontology [Hyperlink](#)

Gene Summary

This gene encodes a member of the carcinoembryonic antigen (CEA) gene family, which belongs to the immunoglobulin superfamily. Two subgroups of the CEA family, the CEA cell adhesion molecules and the pregnancy-specific glycoproteins, are located within a 1.2 Mb cluster on the long arm of chromosome 19. Eleven pseudogenes of the CEA cell adhesion molecule subgroup are also found in the cluster. The encoded protein was originally described in bile ducts of liver as biliary glycoprotein. Subsequently, it was found to be a cell-cell adhesion molecule detected on leukocytes, epithelia, and endothelia. The encoded protein mediates cell adhesion via homophilic as well as heterophilic binding to other proteins of the subgroup. Multiple cellular activities have been attributed to the encoded protein, including roles in the differentiation and arrangement of tissue three-dimensional structure, angiogenesis, apoptosis, tumor suppression, metastasis, and the modulation of innate and adaptive immune responses. Multiple transcript variants encoding different isoforms have been reported, but the full-length nature of only two has been determined. [provided by RefSeq]

Other Designations CD66a antigen|antigen CD66|biliary glycoprotein adhesion molecule|carcinoembryonic antigen-related cell adhesion molecule 1

Disease

- [Body Weight](#)

- [Diabetes Mellitus](#)
- [Genetic Predisposition to Disease](#)
- [Meningococcal Infections](#)
- [Metabolic Syndrome X](#)
- [Osteoporosis](#)