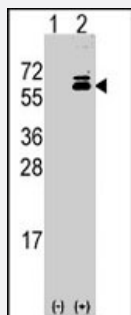


Olfm1 polyclonal antibody

Catalog # PAB2559 Size 400 uL

Applications



Western Blot (Transfected lysate)

Western blot analysis of Olfm1 (arrow) using rabbit Olfm1 polyclonal antibody (Cat # PAB2559). 293 cell lysates (2 ug/lane) either nontransfected (Lane 1) or transiently transfected with the Olfm1 gene (Lane 2) (Origene Technologies).

Specification

Product Description	Rabbit polyclonal antibody raised against synthetic peptide of Olfm1.
Immunogen	A synthetic peptide (conjugated with KLH) corresponding to amino acids 441-471 at C-terminus of r at Olfm1.
Host	Rabbit
Reactivity	Human
Form	Liquid
Purification	Protein G purification
Recommend Usage	Western Blot (1:1000) The optimal working dilution should be determined by the end user.
Storage Buffer	In PBS (0.09% sodium azide)
Storage Instruction	Store at 4°C. For long term storage store at -20°C. Aliquot to avoid repeated freezing and thawing.
Note	This product contains sodium azide: a POISONOUS AND HAZARDOUS SUBSTANCE which should be handled by trained staff only.

Applications

- Western Blot (Transfected lysate)

Western blot analysis of Olfm1 (arrow) using rabbit Olfm1 polyclonal antibody (Cat # PAB2559). 293 cell lysates (2 ug/lane) either nontransfected (Lane 1) or transiently transfected with the Olfm1 gene (Lane 2) (Origene Technologies).

Gene Info — Olfm1

Entrez GeneID [93667](#)

Protein Accession# [NP_006325:Q99784](#)

Gene Name Olfm1

Gene Alias D2Sut1e, Noe1

Gene Description olfactomedin 1

Gene Ontology [Hyperlink](#)

Other Designations olfactomedin related ER localized protein

Publication Reference

- [Human plasma N-glycoproteome analysis by immunoaffinity subtraction, hydrazide chemistry, and mass spectrometry.](#)

Liu T, Qian WJ, Gritsenko MA, Camp DG 2nd, Monroe ME, Moore RJ, Smith RD.

Journal of Proteome Research 2005 Nov; 4(6):2070.

- [Large-scale concatenation cDNA sequencing.](#)

Yu W, Andersson B, Worley KC, Muzny DM, Ding Y, Liu W, Ricafrente JY, Wentland MA, Lennon G, Gibbs RA.

Genome Research 1997 Apr; 7(4):353.

- [Identification and cloning of neuroblastoma-specific and nerve tissue-specific genes through compiled expression profiles.](#)

Yokoyama M, Nishi Y, Yoshii J, Okubo K, Matsubara K.

DNA Research 1996 Oct; 3(5):311.