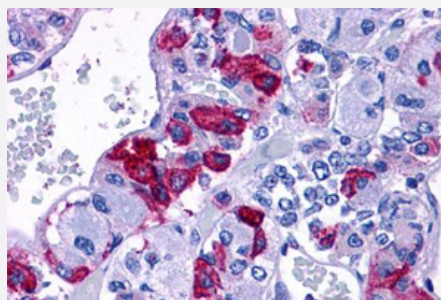


# ADCYAP1R1 polyclonal antibody

Catalog # PAB25588

Size 50 ug

## Applications



### Immunohistochemistry (Formalin/PFA-fixed paraffin-embedded sections)

Immunohistochemical staining of formalin-fixed, paraffin-embedded human brain, pituitary tissue after heat-induced antigen retrieval.  
Using ADCYAP1R1 polyclonal antibody (Cat # PAB25588).

## Specification

<b>Product Description</b>	Rabbit polyclonal antibody raised against synthetic peptide of ADCYAP1R1.
<b>Immunogen</b>	A synthetic peptide corresponding to 17 amino acids at N-terminal extracellular domain of human ADCYAP1R1.
<b>Host</b>	Rabbit
<b>Reactivity</b>	Human, Monkey
<b>Specificity</b>	BLAST analysis of the peptide immunogen showed no homology with other human proteins.
<b>Form</b>	Liquid
<b>Purification</b>	Immunoaffinity chromatography
<b>Recommend Usage</b>	Immunohistochemistry (Formalin/PFA-fixed paraffin-embedded sections) (7 ug/mL) The optimal working dilution should be determined by the end user.
<b>Storage Buffer</b>	In PBS (0.09% sodium azide)
<b>Storage Instruction</b>	Store at 4°C. For long term storage store at -80°C. Aliquot to avoid repeated freezing and thawing.

**Note**

This product contains sodium azide: a POISONOUS AND HAZARDOUS SUBSTANCE which should be handled by trained staff only.

## Applications

- Immunohistochemistry (Formalin/PFA-fixed paraffin-embedded sections)

Immunohistochemical staining of formalin-fixed, paraffin-embedded human brain, pituitary tissue after heat-induced antigen retrieval.

Using ADCYAP1R1 polyclonal antibody (Cat # PAB25588).

## Gene Info — ADCYAP1R1

**Entrez GeneID** [117](#)

**Gene Name** ADCYAP1R1

**Gene Alias** PAC1, PACAPR, PACAPRI

**Gene Description** adenylyl cyclase activating polypeptide 1 (pituitary) receptor type I

**Omim ID** [102981](#)

**Gene Ontology** [Hyperlink](#)

**Gene Summary** This gene encodes type I adenylyl cyclase activating polypeptide receptor, which is a membrane-associated protein and shares significant homology with members of the glucagon/secretin receptor family. This receptor mediates diverse biological actions of adenylyl cyclase activating polypeptide 1 and is positively coupled to adenylyl cyclase. Alternative splicing of two exons of this gene generates four major splice variants, but their full-length nature has not been determined. [provided by RefSeq]

**Other Designations** OTTHUMP00000025502|OTTHUMP00000123435|adenylyl cyclase activating polypeptide 1 (pituitary) receptor type I|pituitary adenylyl cyclase activating polypeptide 1 receptor type I Hiphop

## Pathway

- [Neuroactive ligand-receptor interaction](#)

## Disease

- [Asthma](#)

- [Genetic Predisposition to Disease](#)
- [Mental Disorders](#)