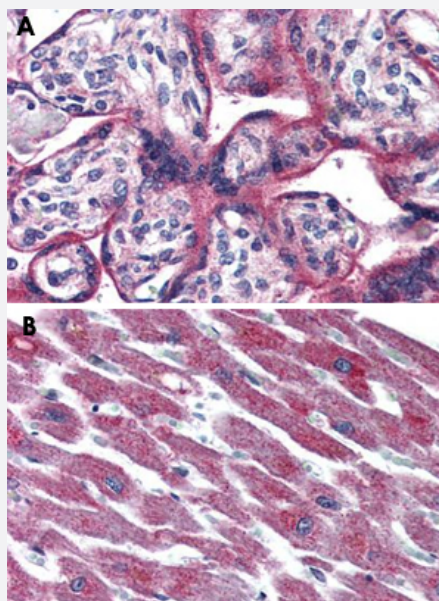


ADCYAP1R1 polyclonal antibody

Catalog # PAB25587

Size 50 ug

Applications



Immunohistochemistry (Formalin/PFA-fixed paraffin-embedded sections)

Immunohistochemical staining of formalin-fixed, paraffin-embedded human placenta (A) and human heart (B) tissue after heat-induced antigen retrieval. Using ADCYAP1R1 polyclonal antibody (Cat # PAB25587).

Specification

| | |
|---------------------|--|
| Product Description | Rabbit polyclonal antibody raised against synthetic peptide of ADCYAP1R1. |
| Immunogen | A synthetic peptide corresponding to 18 amino acids at N-terminal extracellular domain of human ADCYAP1R1. |
| Host | Rabbit |
| Reactivity | Human, Monkey |
| Specificity | BLAST analysis of the peptide immunogen showed no homology with other human proteins. |
| Form | Liquid |
| Purification | Immunoaffinity chromatography |

| | |
|----------------------------|--|
| Recommend Usage | Immunohistochemistry (Formalin/PFA-fixed paraffin-embedded sections) (5-7 ug/mL) The optimal working dilution should be determined by the end user. |
| Storage Buffer | In PBS (0.09% sodium azide) |
| Storage Instruction | Store at 4°C. For long term storage store at -80°C. Aliquot to avoid repeated freezing and thawing. |
| Note | This product contains sodium azide: a POISONOUS AND HAZARDOUS SUBSTANCE which should be handled by trained staff only. |

Applications

- Immunohistochemistry (Formalin/PFA-fixed paraffin-embedded sections)

Immunohistochemical staining of formalin-fixed, paraffin-embedded human placenta (A) and human heart (B) tissue after heat-induced antigen retrieval.

Using ADCYAP1R1 polyclonal antibody (Cat # PAB25587).

- Enzyme-linked Immunoabsorbent Assay

Gene Info — ADCYAP1R1

| | |
|---------------------------|---|
| Entrez GeneID | 117 |
| Gene Name | ADCYAP1R1 |
| Gene Alias | PAC1, PACAPR, PACAPRI |
| Gene Description | adenylate cyclase activating polypeptide 1 (pituitary) receptor type I |
| Omim ID | 102981 |
| Gene Ontology | Hyperlink |
| Gene Summary | This gene encodes type I adenylate cyclase activating polypeptide receptor, which is a membrane-associated protein and shares significant homology with members of the glucagon/secretin receptor family. This receptor mediates diverse biological actions of adenylate cyclase activating polypeptide 1 and is positively coupled to adenylate cyclase. Alternative splicing of two exons of this gene generates four major splice variants, but their full-length nature has not been determined. [provided by RefSeq] |
| Other Designations | OTTHUMP00000025502 OTTHUMP00000123435 adenylate cyclase activating polypeptide 1 (pituitary) receptor type 1 pituitary adenylate cyclase activating polypeptide 1 receptor type I Hiphop |

Pathway

- [Neuroactive ligand-receptor interaction](#)

Disease

- [Asthma](#)
- [Genetic Predisposition to Disease](#)
- [Mental Disorders](#)