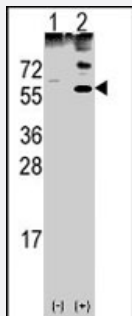


OLFM1 polyclonal antibody

Catalog # PAB2558

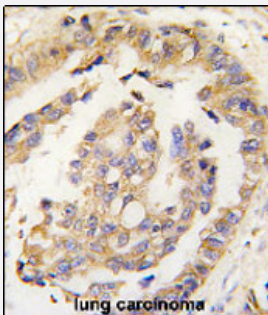
Size 400 uL

Applications



Western Blot (Transfected lysate)

Western blot analysis of OLFM1 (arrow) using rabbit OLFM1 polyclonal antibody (Cat # PAB2558). 293 cell lysates (2 ug/lane) either nontransfected (Lane 1) or transiently transfected with the OLFM1 gene (Lane 2) (Origene Technologies).



Immunohistochemistry (Formalin/PFA-fixed paraffin-embedded sections)

Formalin-fixed and paraffin-embedded human lung carcinoma tissue reacted with OLFM1 polyclonal antibody (Cat # PAB2558), which was peroxidase-conjugated to the secondary antibody, followed by DAB staining. This data demonstrates the use of this antibody for immunohistochemistry; clinical relevance has not been evaluated.

Specification

Product Description	Rabbit polyclonal antibody raised against synthetic peptide of OLFM1.
Immunogen	A synthetic peptide (conjugated with KLH) corresponding to N-terminus of human OLFM1.
Host	Rabbit
Reactivity	Human
Form	Liquid
Purification	Protein G purification

Recommend Usage	Western Blot (1:1000) Immunohistochemistry (1:10-50) The optimal working dilution should be determined by the end user.
Storage Buffer	In PBS (0.09% sodium azide)
Storage Instruction	Store at 4°C. For long term storage store at -20°C. Aliquot to avoid repeated freezing and thawing.
Note	This product contains sodium azide: a POISONOUS AND HAZARDOUS SUBSTANCE which should be handled by trained staff only.

Applications

- Western Blot (Transfected lysate)

Western blot analysis of OLFM1 (arrow) using rabbit OLFM1 polyclonal antibody (Cat # PAB2558). 293 cell lysates (2 ug/lane) either nontransfected (Lane 1) or transiently transfected with the OLFM1 gene (Lane 2) (Origene Technologies).

- Immunohistochemistry (Formalin/PFA-fixed paraffin-embedded sections)

Formalin-fixed and paraffin-embedded human lung carcinoma tissue reacted with OLFM1 polyclonal antibody (Cat # PAB2558), which was peroxidase-conjugated to the secondary antibody, followed by DAB staining. This data demonstrates the use of this antibody for immunohistochemistry; clinical relevance has not been evaluated.

Gene Info — OLFM1

Entrez GeneID	10439
Protein Accession#	NP_006325:Q99784
Gene Name	OLFM1
Gene Alias	AMY, NOE1, NOELIN1, OlfA
Gene Description	olfactomedin 1
Omim ID	605366
Gene Ontology	Hyperlink
Gene Summary	This gene product shares extensive sequence similarity with the rat neuronal olfactomedin-related ER localized protein. While the exact function of the encoded protein is not known, its abundant expression in brain suggests that it may have an essential role in nerve tissue. Several alternatively spliced transcripts encoding different isoforms have been found for this gene. [provided by RefSeq]

Other Designations

OTTHUMP00000022526|OTTHUMP00000022527|neuroblastoma protein|noelin|olfactomedin related ER localized protein|pancortin 1

Publication Reference

- [Human plasma N-glycoproteome analysis by immunoaffinity subtraction, hydrazide chemistry, and mass spectrometry.](#)

Liu T, Qian WJ, Gritsenko MA, Camp DG 2nd, Monroe ME, Moore RJ, Smith RD.

Journal of Proteome Research 2005 Nov; 4(6):2070.

- [Large-scale concatenation cDNA sequencing.](#)

Yu W, Andersson B, Worley KC, Muzny DM, Ding Y, Liu W, Ricafrente JY, Wentland MA, Lennon G, Gibbs RA.

Genome Research 1997 Apr; 7(4):353.

- [Identification and cloning of neuroblastoma-specific and nerve tissue-specific genes through compiled expression profiles.](#)

Yokoyama M, Nishi Y, Yoshii J, Okubo K, Matsubara K.

DNA Research 1996 Oct; 3(5):311.

Disease

- [Tobacco Use Disorder](#)