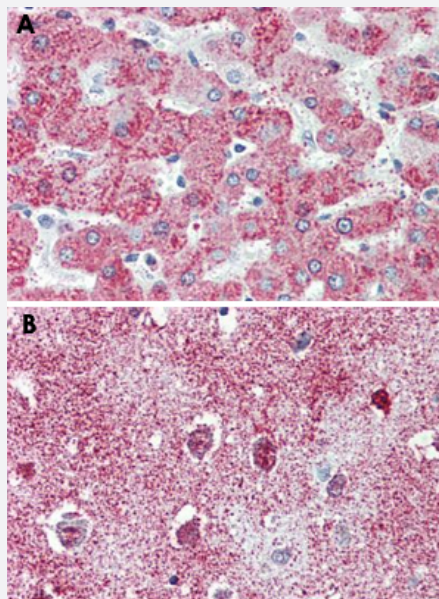


# TAOK1 polyclonal antibody

Catalog # PAB25578

Size 50 ug

## Applications



### Immunohistochemistry (Formalin/PFA-fixed paraffin-embedded sections)

Immunohistochemical staining of formalin-fixed, paraffin-embedded human liver (A) and human brain, cortex (B) tissue after heat-induced antigen retrieval. Using TAOK1 polyclonal antibody (Cat # PAB25578).

## Specification

<b>Product Description</b>	Rabbit polyclonal antibody raised against synthetic peptide of TAOK1.
<b>Immunogen</b>	A synthetic peptide corresponding to 17 amino acids at C-terminus of human TAOK1.
<b>Host</b>	Rabbit
<b>Reactivity</b>	Bovine, Chicken, Dog, Hamster, Horse, Human, Monkey, Mouse, Pig, Rabbit, Rat
<b>Specificity</b>	BLAST analysis of the peptide immunogen showed no homology with other human proteins.
<b>Form</b>	Liquid
<b>Purification</b>	Immunoaffinity chromatography
<b>Recommend Usage</b>	Immunohistochemistry (Formalin/PFA-fixed paraffin-embedded sections) (5 ug/mL) The optimal working dilution should be determined by the end user.

<b>Storage Buffer</b>	In PBS (0.09% sodium azide)
<b>Storage Instruction</b>	Store at 4°C. For long term storage store at -80°C. Aliquot to avoid repeated freezing and thawing.
<b>Note</b>	This product contains sodium azide: a POISONOUS AND HAZARDOUS SUBSTANCE which should be handled by trained staff only.

## Applications

- Immunohistochemistry (Formalin/PFA-fixed paraffin-embedded sections)

Immunohistochemical staining of formalin-fixed, paraffin-embedded human liver (A) and human brain, cortex (B) tissue after heat-induced antigen retrieval.

Using TAOK1 polyclonal antibody (Cat # PAB25578).

- Enzyme-linked Immunoabsorbent Assay

## Gene Info — TAOK1

<b>Entrez GeneID</b>	<a href="#">57551</a>
<b>Gene Name</b>	TAOK1
<b>Gene Alias</b>	FLJ14314, KIAA1361, MAP3K16, MARKK, PSK2, TAO1
<b>Gene Description</b>	TAO kinase 1
<b>Omim ID</b>	<a href="#">610266</a>
<b>Gene Ontology</b>	<a href="#">Hyperlink</a>
<b>Other Designations</b>	STE20-like kinase microtubule affinity regulating kinase kinase serine/threonine kinase TAO1 serine/threonine protein kinase TAO1 homolog

## Pathway

- [MAPK signaling pathway](#)

## Disease

- [Disease Progression](#)

- [Disease Susceptibility](#)
- [HIV Infections](#)