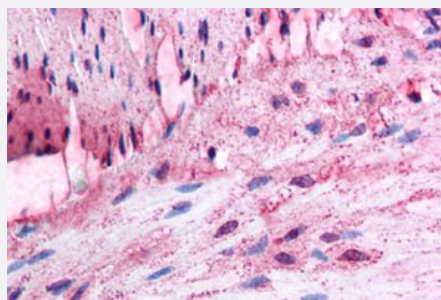


ADRA1D polyclonal antibody

Catalog # PAB25550

Size 50 ug

Applications



Immunohistochemistry (Formalin/PFA-fixed paraffin-embedded sections)

Immunohistochemical staining of formalin-fixed, paraffin-embedded human colon, smooth muscle tissue after heat-induced antigen retrieval. Using ADRA1D polyclonal antibody (Cat # PAB25550).

Specification

Product Description	Rabbit polyclonal antibody raised against synthetic peptide of ADRA1D.
Immunogen	A synthetic peptide corresponding to 18 amino acids at 2nd extracellular domain of human ADRA1D.
Host	Rabbit
Reactivity	Dog, Guinea pig, Horse, Human, Monkey, Pig
Specificity	BLAST analysis of the peptide immunogen showed no homology with other human proteins, except ADRA1B (56%).
Form	Liquid
Purification	Immunoaffinity chromatography
Recommend Usage	Immunohistochemistry (Formalin/PFA-fixed paraffin-embedded sections) (2.5 ug/mL) The optimal working dilution should be determined by the end user.
Storage Buffer	In PBS (0.09% sodium azide)
Storage Instruction	Store at 4°C. For long term storage store at -80°C. Aliquot to avoid repeated freezing and thawing.

Note

This product contains sodium azide: a POISONOUS AND HAZARDOUS SUBSTANCE which should be handled by trained staff only.

Applications

- Immunohistochemistry (Formalin/PFA-fixed paraffin-embedded sections)

Immunohistochemical staining of formalin-fixed, paraffin-embedded human colon, smooth muscle tissue after heat-induced antigen retrieval.

Using ADRA1D polyclonal antibody (Cat # PAB25550).

Gene Info — ADRA1D

Entrez GeneID [146](#)

Gene Name ADRA1D

Gene Alias ADRA1, ADRA1A, ADRA1R, ALPHA1, DAR, dJ779E11.2

Gene Description adrenergic, alpha-1D-, receptor

Omim ID [104219](#)

Gene Ontology [Hyperlink](#)

Gene Summary Alpha-1-adrenergic receptors (alpha-1-ARs) are members of the G protein-coupled receptor superfamily. They activate mitogenic responses and regulate growth and proliferation of many cells. There are 3 alpha-1-AR subtypes: alpha-1A, -1B and -1D, all of which signal through the Gq/11 family of G-proteins and different subtypes show different patterns of activation. This gene encodes alpha-1D-adrenergic receptor. Similar to alpha-1B-adrenergic receptor gene, this gene comprises 2 exons and a single intron that interrupts the coding region. [provided by RefSeq]

Other Designations OTTHUMP00000030160|adrenergic, alpha -1D-, receptor|adrenergic, alpha-1A-, receptor|alpha-1D-adrenergic receptor

Pathway

- [Calcium signaling pathway](#)
- [Neuroactive ligand-receptor interaction](#)
- [Vascular smooth muscle contraction](#)

Disease

- [Cardiomyopathy](#)
- [Cardiovascular Diseases](#)
- [Cystitis](#)
- [Diabetes Mellitus](#)
- [Edema](#)
- [Gastroparesis](#)
- [Genetic Predisposition to Disease](#)
- [Mental Disorders](#)