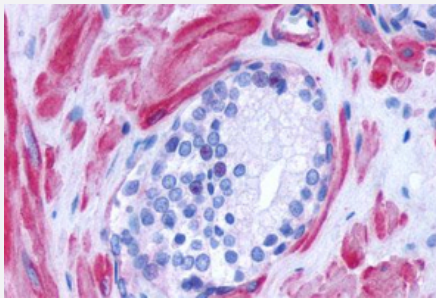


# ADRA1D polyclonal antibody

Catalog # PAB25531

Size 50 ug

## Applications



### Immunohistochemistry (Formalin/PFA-fixed paraffin-embedded sections)

Immunohistochemical staining of formalin-fixed, paraffin-embedded human prostate tissue after heat-induced antigen retrieval.  
Using ADRA1D polyclonal antibody (Cat # PAB25531).

## Specification

<b>Product Description</b>	Rabbit polyclonal antibody raised against synthetic peptide of ADRA1D.
<b>Immunogen</b>	A synthetic peptide corresponding to 20 amino acids at 3rd cytoplasmic domain of human ADRA1D.
<b>Host</b>	Rabbit
<b>Reactivity</b>	Bovine, Dog, Horse, Human, Monkey, Pig, Rabbit
<b>Specificity</b>	BLAST analysis of the peptide immunogen showed no homology with other human proteins.
<b>Form</b>	Liquid
<b>Purification</b>	Immunoaffinity chromatography
<b>Recommend Usage</b>	Immunohistochemistry (Formalin/PFA-fixed paraffin-embedded sections) (1-3 ug/mL) The optimal working dilution should be determined by the end user.
<b>Storage Buffer</b>	In PBS (0.09% sodium azide)
<b>Storage Instruction</b>	Store at 4°C. For long term storage store at -80°C. Aliquot to avoid repeated freezing and thawing.

**Note**

This product contains sodium azide: a POISONOUS AND HAZARDOUS SUBSTANCE which should be handled by trained staff only.

## Applications

- Immunohistochemistry (Formalin/PFA-fixed paraffin-embedded sections)

Immunohistochemical staining of formalin-fixed, paraffin-embedded human prostate tissue after heat-induced antigen retrieval. Using ADRA1D polyclonal antibody (Cat # PAB25531).

## Gene Info — ADRA1D

Entrez GeneID [146](#)

Gene Name ADRA1D

Gene Alias ADRA1, ADRA1A, ADRA1R, ALPHA1, DAR, dJ779E11.2

Gene Description adrenergic, alpha-1D-, receptor

Omim ID [104219](#)

Gene Ontology [Hyperlink](#)

**Gene Summary** Alpha-1-adrenergic receptors (alpha-1-ARs) are members of the G protein-coupled receptor superfamily. They activate mitogenic responses and regulate growth and proliferation of many cells. There are 3 alpha-1-AR subtypes: alpha-1A, -1B and -1D, all of which signal through the Gq/11 family of G-proteins and different subtypes show different patterns of activation. This gene encodes alpha-1D-adrenergic receptor. Similar to alpha-1B-adrenergic receptor gene, this gene comprises 2 exons and a single intron that interrupts the coding region. [provided by RefSeq]

**Other Designations** OTTHUMP00000030160|adrenergic, alpha -1D-, receptor|adrenergic, alpha-1A-, receptor|alpha-1D-adrenergic receptor

## Pathway

- [Calcium signaling pathway](#)
- [Neuroactive ligand-receptor interaction](#)
- [Vascular smooth muscle contraction](#)

## Disease

- [Cardiomyopathy](#)
- [Cardiovascular Diseases](#)
- [Cystitis](#)
- [Diabetes Mellitus](#)
- [Edema](#)
- [Gastroparesis](#)
- [Genetic Predisposition to Disease](#)
- [Mental Disorders](#)