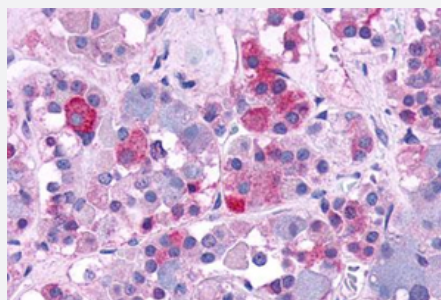


# AVPR1B polyclonal antibody

Catalog # PAB25516

Size 50 ug

## Applications



### Immunohistochemistry (Formalin/PFA-fixed paraffin-embedded sections)

Immunohistochemical staining of formalin-fixed, paraffin-embedded human brain, pituitary tissue after heat-induced antigen retrieval.  
Using AVPR1B polyclonal antibody (Cat # PAB25516).

## Specification

<b>Product Description</b>	Rabbit polyclonal antibody raised against synthetic peptide of AVPR1B.
<b>Immunogen</b>	A synthetic peptide corresponding to 17 amino acids at N-terminal extracellular domain of human AVPR1B.
<b>Host</b>	Rabbit
<b>Reactivity</b>	Bovine, Dog, Horse, Human, Pig, Rabbit, Rat
<b>Specificity</b>	BLAST analysis of the peptide immunogen showed no homology with other human proteins.
<b>Form</b>	Liquid
<b>Purification</b>	Immunoaffinity chromatography
<b>Recommend Usage</b>	Immunohistochemistry (Formalin/PFA-fixed paraffin-embedded sections) (4 ug/mL) The optimal working dilution should be determined by the end user.
<b>Storage Buffer</b>	In PBS (0.09% sodium azide)
<b>Storage Instruction</b>	Store at 4°C. For long term storage store at -80°C. Aliquot to avoid repeated freezing and thawing.

**Note**

This product contains sodium azide: a POISONOUS AND HAZARDOUS SUBSTANCE which should be handled by trained staff only.

## Applications

- Immunohistochemistry (Formalin/PFA-fixed paraffin-embedded sections)

Immunohistochemical staining of formalin-fixed, paraffin-embedded human brain, pituitary tissue after heat-induced antigen retrieval.

Using AVPR1B polyclonal antibody (Cat # PAB25516).

## Gene Info — AVPR1B

**Entrez GeneID** [553](#)

**Gene Name** AVPR1B

**Gene Alias** AVPR3

**Gene Description** arginine vasopressin receptor 1B

**Omim ID** [600264](#)

**Gene Ontology** [Hyperlink](#)

**Gene Summary** The protein encoded by this gene acts as receptor for arginine vasopressin. This receptor belongs to the subfamily of G-protein coupled receptors which includes AVPR1A, V2R and OXT receptors. Its activity is mediated by G proteins which stimulate a phosphatidylinositol-calcium second messenger system. The receptor is primarily located in the anterior pituitary, where it stimulates ACTH release. It is expressed at high levels in ACTH-secreting pituitary adenomas as well as in bronchial carcinoids responsible for the ectopic ACTH syndrome. A spliced antisense transcript of this gene has been reported but its function is not known. [provided by RefSeq]

**Other Designations** OTTHUMP00000034344|antidiuretic hormone receptor 1B|arginine vasopressin receptor 3|pituitary vasopressin receptor 3|vasopressin V1B receptor

## Pathway

- [Calcium signaling pathway](#)
- [Neuroactive ligand-receptor interaction](#)
- [Vascular smooth muscle contraction](#)

## Disease

- [Asperger Syndrome](#)
- [Attention Deficit Disorder with Hyperactivity](#)
- [Autistic Disorder](#)
- [Depressive Disorder](#)
- [Disease Models](#)
- [Genetic Predisposition to Disease](#)
- [Mental Disorders](#)
- [Mood Disorders](#)
- [Panic Disorder](#)
- [Psychiatric Status Rating Scales](#)
- [Social Perception](#)
- [Stress](#)