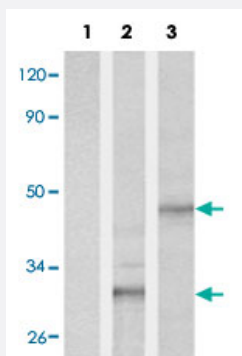


# His tag polyclonal antibody

Catalog # PAB25507      Size 100 ug

## Applications



### Western Blot (Transfected lysate)

Western blot analysis of extract from 293 cells (Lane 1) or transfected with His-tagged S6 (Lane 2) and transfected with His-tagged CREB (Lane 3) using His tag polyclonal antibody (Cat # PAB25507).

## Specification

<b>Product Description</b>	Rabbit polyclonal antibody raised against synthetic peptide of His tag.
<b>Immunogen</b>	A synthetic peptide corresponding to His tag.
<b>Sequence</b>	HHHHHH
<b>Host</b>	Rabbit
<b>Form</b>	Liquid
<b>Purification</b>	Protein G purification
<b>Recommend Usage</b>	Western Blot (1:500-1:1000) The optimal working dilution should be determined by the end user.
<b>Storage Buffer</b>	In PBS, pH 7.4 (50% glycerol, 0.02% sodium azide)
<b>Storage Instruction</b>	Store at -20°C. Aliquot to avoid repeated freezing and thawing.
<b>Note</b>	This product contains sodium azide: a POISONOUS AND HAZARDOUS SUBSTANCE which should be handled by trained staff only.

## Applications

- Western Blot (Transfected lysate)

Western blot analysis of extract from 293 cells (Lane 1) or transfected with His-tagged S6 (Lane 2) and transfected with His-tagged CREB (Lane 3) using His tag polyclonal antibody (Cat # PAB25507).