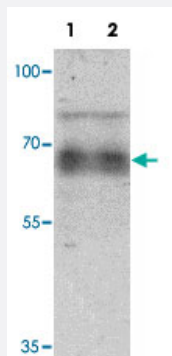


# GZF1 polyclonal antibody

Catalog # PAB25498

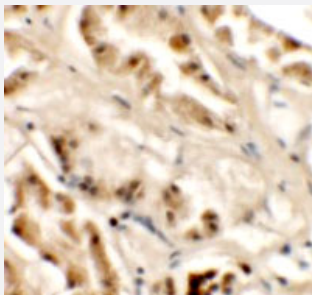
Size 100 ug

## Applications



### Western Blot (Tissue lysate)

Western blot analysis of human heart tissue lysate with GZF1 polyclonal antibody (Cat # PAB25498) at 1 ug/mL.



### Immunohistochemistry

Immunohistochemical analysis of human kidney tissue with GZF1 polyclonal antibody (Cat # PAB25498) at 2.5 ug/mL.

## Specification

<b>Product Description</b>	Rabbit polyclonal antibody raised against synthetic peptide of GZF1.
<b>Immunogen</b>	A synthetic peptide corresponding to C-terminus of human GZF1.
<b>Host</b>	Rabbit
<b>Reactivity</b>	Human
<b>Specificity</b>	GZF1 antibody is human specific. At least four isoforms of GZF1 are known to exist.
<b>Form</b>	Liquid

Purification	Affinity purification
Concentration	1 mg/mL
Recommend Usage	Western Blot (1 ug/mL) Immunohistochemistry (2.5 ug/mL) The optimal working dilution should be determined by the end user.
Storage Buffer	In PBS (0.02% sodium azide)
Storage Instruction	Store at 4°C for three months. For long term storage store at -20°C. Aliquot to avoid repeated freezing and thawing.
Note	This product contains sodium azide: a POISONOUS AND HAZARDOUS SUBSTANCE which should be handled by trained staff only.

## Applications

- Western Blot (Tissue lysate)

Western blot analysis of human heart tissue lysate with GZF1 polyclonal antibody (Cat # PAB25498) at 1 ug/mL.

- Immunohistochemistry

Immunohistochemical analysis of human kidney tissue with GZF1 polyclonal antibody (Cat # PAB25498) at 2.5 ug/mL.

- Enzyme-linked Immunoabsorbent Assay

## Gene Info — GZF1

Entrez GeneID	<a href="#">64412</a>
Protein Accession#	<a href="#">NP_071927</a>
Gene Name	GZF1
Gene Alias	ZBTB23, ZNF336
Gene Description	GDNF-inducible zinc finger protein 1
Gene Ontology	<a href="#">Hyperlink</a>
Other Designations	OTTHUMP00000030431 zinc finger protein 336