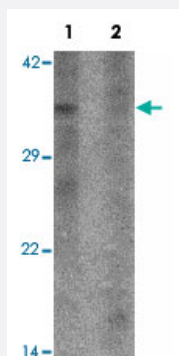


# WDR5 polyclonal antibody

Catalog # PAB25494      Size 100 ug

## Applications



### Western Blot (Cell lysate)

Western blot analysis of 293 cell lysate with WDR5 polyclonal antibody (Cat # PAB25494) at 1 ug/mL in (1) the absence and (2) the presence of blocking peptide.



### Immunocytochemistry

Immunocytochemical analysis of 293 cells with WDR5 polyclonal antibody (Cat # PAB25494) at 5 ug/mL.

## Specification

<b>Product Description</b>	Rabbit polyclonal antibody raised against synthetic peptide of WDR5.
<b>Immunogen</b>	A synthetic peptide corresponding to N-terminus of human WDR5.
<b>Host</b>	Rabbit
<b>Reactivity</b>	Human
<b>Specificity</b>	WDR5 antibody is human specific. WDR5 antibody is predicted to not cross-react with other WDR family members.
<b>Form</b>	Liquid

<b>Purification</b>	Affinity purification
<b>Concentration</b>	1 mg/mL
<b>Recommend Usage</b>	Western Blot (1 ug/mL) Immunocytochemistry (5 ug/mL) The optimal working dilution should be determined by the end user.
<b>Storage Buffer</b>	In PBS (0.02% sodium azide)
<b>Storage Instruction</b>	Store at 4°C for three months. For long term storage store at -20°C. Aliquot to avoid repeated freezing and thawing.
<b>Note</b>	This product contains sodium azide: a POISONOUS AND HAZARDOUS SUBSTANCE which should be handled by trained staff only.

## Applications

- Western Blot (Cell lysate)

Western blot analysis of 293 cell lysate with WDR5 polyclonal antibody (Cat # PAB25494) at 1 ug/mL in (1) the absence and (2) the presence of blocking peptide.

- Immunocytochemistry

Immunocytochemical analysis of 293 cells with WDR5 polyclonal antibody (Cat # PAB25494) at 5 ug/mL.

- Enzyme-linked Immunoabsorbent Assay

## Gene Info — WDR5

<b>Entrez GeneID</b>	<a href="#">11091</a>
<b>Protein Accession#</b>	<a href="#">NP_060058</a>
<b>Gene Name</b>	WDR5
<b>Gene Alias</b>	BIG-3, SWD3
<b>Gene Description</b>	WD repeat domain 5
<b>Omim ID</b>	<a href="#">609012</a>
<b>Gene Ontology</b>	<a href="#">Hyperlink</a>

**Gene Summary**

This gene encodes a member of the WD repeat protein family. WD repeats are minimally conserved regions of approximately 40 amino acids typically bracketed by gly-his and trp-aspartate (GH-WD), which may facilitate formation of heterotrimeric or multiprotein complexes. Members of this family are involved in a variety of cellular processes, including cell cycle progression, signal transduction, apoptosis, and gene regulation. This protein contains 7 WD repeats. Alternatively spliced transcript variants encoding the same protein have been identified. [provided by RefSeq]

**Other Designations**

BMP2-induced 3-kb gene protein|SWD3, Set1c WD40 repeat protein, homolog|WD-repeat protein 5