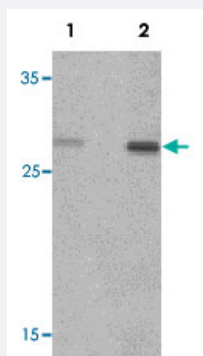


CLEC7A polyclonal antibody

Catalog # PAB25491

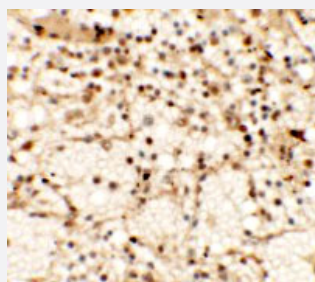
Size 100 ug

Applications



Western Blot (Tissue lysate)

Western blot analysis of rat spleen tissue lysate with CLEC7A polyclonal antibody (Cat # PAB25491) at (1) 1 and (2) 2 ug/mL.



Immunohistochemistry

Immunohistochemical analysis of human spleen tissue with CLEC7A polyclonal antibody (Cat # PAB25491) at 5 ug/mL.

Specification

Product Description	Rabbit polyclonal antibody raised against synthetic peptide of CLEC7A.
Immunogen	A synthetic peptide corresponding to internal region of human CLEC7A.
Host	Rabbit
Reactivity	Human, Mouse, Rat
Specificity	Multiple isoforms of CLEC7A are known to exist.
Form	Liquid

Purification	Affinity purification
Concentration	1 mg/mL
Recommend Usage	Western Blot (1-2 ug/mL) Immunohistochemistry (5 ug/mL) The optimal working dilution should be determined by the end user.
Storage Buffer	In PBS (0.02% sodium azide)
Storage Instruction	Store at 4°C for three months. For long term storage store at -20°C. Aliquot to avoid repeated freezing and thawing.
Note	This product contains sodium azide: a POISONOUS AND HAZARDOUS SUBSTANCE which should be handled by trained staff only.

Applications

- Western Blot (Tissue lysate)

Western blot analysis of rat spleen tissue lysate with CLEC7A polyclonal antibody (Cat # PAB25491) at (1) 1 and (2) 2 ug/mL.

- Immunohistochemistry

Immunohistochemical analysis of human spleen tissue with CLEC7A polyclonal antibody (Cat # PAB25491) at 5 ug/mL.

- Enzyme-linked Immunoabsorbent Assay

Gene Info — CLEC7A

Entrez GeneID	64581
Protein Accession#	NP_922938
Gene Name	CLEC7A
Gene Alias	BGR, CLECSF12, DECTIN1
Gene Description	C-type lectin domain family 7, member A
Omim ID	606264
Gene Ontology	Hyperlink

Gene Summary

This gene encodes a member of the C-type lectin/C-type lectin-like domain (CTL/CTLD) superfamily. The encoded glycoprotein is a small type II membrane receptor with an extracellular C-type lectin-like domain fold and a cytoplasmic domain with an immunoreceptor tyrosine-based activation motif. It functions as a pattern-recognition receptor that recognizes a variety of beta-1,3-linked and beta-1,6-linked glucans from fungi and plants, and in this way plays a role in innate immune response. Alternate transcriptional splice variants, encoding different isoforms, have been characterized. This gene is closely linked to other CTL/CTLD superfamily members on chromosome 12p13 in the natural killer gene complex region. [provided by RefSeq]

Other Designations

C-type (calcium dependent, carbohydrate-recognition domain) lectin, superfamily member 12|beta-glucan receptor|dectin-1|dendritic cell-associated C-type lectin 1|dendritic cell-associated C-type lectin-1|lectin-like receptor 1

Publication Reference

- [Polarization and \$\beta\$ -Glucan Reprogram Immunomodulatory Metabolism in Human Macrophages and Ex Vivo in Human Lung Cancer Tissues.](#)

Teresa W-M Fan, Saeed Daneshmandi, Teresa A Cassel, Mohammad B Uddin, James Sledziona, Patrick T Thompson, Penghui Lin, Richard M Higashi, Andrew N Lane.

Journal of immunology 2022 Nov; 209(9):1674.

Application: Array, Human, Human monocytes

Disease

- [Aspergillosis](#)
- [Candidiasis](#)
- [Disease Susceptibility](#)
- [Genetic Predisposition to Disease](#)
- [Graft vs Host Disease](#)
- [HIV Infections](#)
- [Inflammation](#)
- [Inflammatory Bowel Diseases](#)
- [Opportunistic Infections](#)