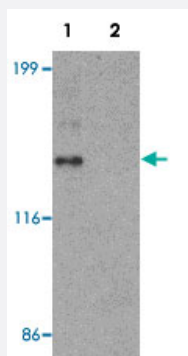


ZNF521 polyclonal antibody

Catalog # PAB25485 Size 100 ug

Applications



Western Blot (Cell lysate)

Western blot analysis of HeLa cell lysate with ZNF521 polyclonal antibody (Cat # PAB25485) at 1 ug/mL in (1) the absence and (2) the presence of blocking peptide.



Immunocytochemistry

Immunocytochemical analysis of HeLa cells with ZNF521 polyclonal antibody (Cat # PAB25485) at 2.5 ug/mL.

Specification

Product Description	Rabbit polyclonal antibody raised against synthetic peptide of ZNF521.
Immunogen	A synthetic peptide corresponding to N-terminus of human ZNF521.
Host	Rabbit
Reactivity	Human
Specificity	ZNF521 antibody is human specific.
Form	Liquid

Purification	Affinity purification
Concentration	1 mg/mL
Recommend Usage	Western Blot (1 ug/mL) Immunocytochemistry (2.5 ug/mL) The optimal working dilution should be determined by the end user.
Storage Buffer	In PBS (0.02% sodium azide)
Storage Instruction	Store at 4°C for three months. For long term storage store at -20°C. Aliquot to avoid repeated freezing and thawing.
Note	This product contains sodium azide: a POISONOUS AND HAZARDOUS SUBSTANCE which should be handled by trained staff only.

Applications

- Western Blot (Cell lysate)

Western blot analysis of HeLa cell lysate with ZNF521 polyclonal antibody (Cat # PAB25485) at 1 ug/mL in (1) the absence and (2) the presence of blocking peptide.

- Immunocytochemistry

Immunocytochemical analysis of HeLa cells with ZNF521 polyclonal antibody (Cat # PAB25485) at 2.5 ug/mL.

- Enzyme-linked Immunoabsorbent Assay

Gene Info — ZNF521

Entrez GeneID	25925
Protein Accession#	NP_056276
Gene Name	ZNF521
Gene Alias	DKFZp564D0764, EHZF, Evi3, MGC142182, MGC142208
Gene Description	zinc finger protein 521
Omim ID	610974
Gene Ontology	Hyperlink
Other Designations	early hematopoietic zinc finger