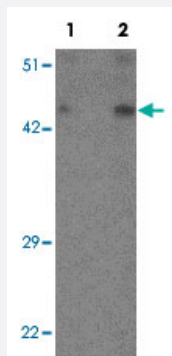


DBX2 polyclonal antibody

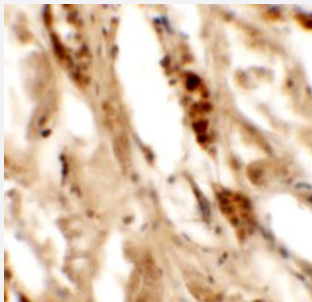
Catalog # PAB25483 Size 100 ug

Applications



Western Blot (Tissue lysate)

Western blot analysis of human kidney tissue lysate with DBX2 polyclonal antibody (Cat # PAB25483) at (1) 1 and (2) 2 ug/mL.



Immunohistochemistry

Immunohistochemical analysis of human kidney tissue with DBX2 polyclonal antibody (Cat # PAB25483) at 5 ug/mL.

Specification

Product Description	Rabbit polyclonal antibody raised against synthetic peptide of DBX2.
Immunogen	A synthetic peptide corresponding to N-terminus of human DBX2.
Host	Rabbit
Reactivity	Human
Specificity	DBX2 antibody is human specific. At least two isoforms of DBX2 are known to exist; this antibody will only detect the shortest isoform.
Form	Liquid

Purification	Affinity purification
Concentration	1 mg/mL
Recommend Usage	Western Blot (1-2 ug/mL) Immunohistochemistry (5 ug/mL) The optimal working dilution should be determined by the end user.
Storage Buffer	In PBS (0.02% sodium azide)
Storage Instruction	Store at 4°C for three months. For long term storage store at -20°C. Aliquot to avoid repeated freezing and thawing.
Note	This product contains sodium azide: a POISONOUS AND HAZARDOUS SUBSTANCE which should be handled by trained staff only.

Applications

- Western Blot (Tissue lysate)

Western blot analysis of human kidney tissue lysate with DBX2 polyclonal antibody (Cat # PAB25483) at (1) 1 and (2) 2 ug/mL.

- Immunohistochemistry

Immunohistochemical analysis of human kidney tissue with DBX2 polyclonal antibody (Cat # PAB25483) at 5 ug/mL.

- Enzyme-linked Immunoabsorbent Assay

Gene Info — DBX2

Entrez GeneID	440097
Protein Accession#	NP_001004329
Gene Name	DBX2
Gene Alias	FLJ16139
Gene Description	developing brain homeobox 2
Gene Ontology	Hyperlink
Other Designations	-

Disease

- [Tobacco Use Disorder](#)