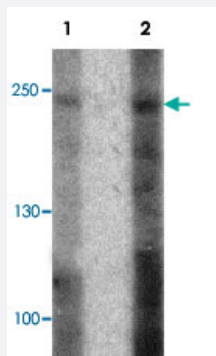


ABCA7 polyclonal antibody

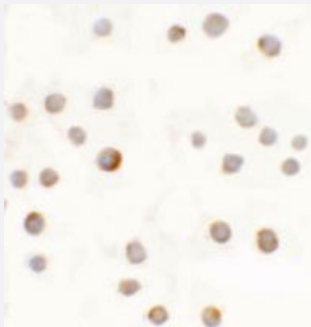
Catalog # PAB25479 Size 100 ug

Applications



Western Blot (Cell lysate)

Western blot analysis of 293 cell lysate with ABCA7 polyclonal antibody (Cat # PAB25479) at (1) 1 and (2) 2 ug/mL.



Immunocytochemistry

Immunocytochemical anyalysis of 293 cells with ABCA7 polyclonal antibody (Cat # PAB25479) at 5 ug/mL.

Specification

Product Description	Rabbit polyclonal antibody raised against synthetic peptide of ABCA7.
Immunogen	A synthetic peptide corresponding to N-terminus of human ABCA7.
Host	Rabbit
Reactivity	Human
Specificity	ABCA7 antibody is human specific. At least two alternatively spliced transcript variants encoding dist inct isoforms have been observed.
Form	Liquid

Purification	Affinity purification
Concentration	1 mg/mL
Recommend Usage	Western Blot (1-2 ug/mL) Immunocytochemistry (5 ug/mL) The optimal working dilution should be determined by the end user.
Storage Buffer	In PBS (0.02% sodium azide)
Storage Instruction	Store at 4°C for three months. For long term storage store at -20°C. Aliquot to avoid repeated freezing and thawing.
Note	This product contains sodium azide: a POISONOUS AND HAZARDOUS SUBSTANCE which should be handled by trained staff only.

Applications

- Western Blot (Cell lysate)

Western blot analysis of 293 cell lysate with ABCA7 polyclonal antibody (Cat # PAB25479) at (1) 1 and (2) 2 ug/mL.

- Immunocytochemistry

Immunocytochemical analysis of 293 cells with ABCA7 polyclonal antibody (Cat # PAB25479) at 5 ug/mL.

- Enzyme-linked Immunoabsorbent Assay

Gene Info — ABCA7

Entrez GeneID	10347
Protein Accession#	NP_061985
Gene Name	ABCA7
Gene Alias	ABCA-SSN, ABCX, FLJ40025
Gene Description	ATP-binding cassette, sub-family A (ABC1), member 7
Omim ID	605414
Gene Ontology	Hyperlink

Gene Summary

The protein encoded by this gene is a member of the superfamily of ATP-binding cassette (ABC) transporters. ABC proteins transport various molecules across extra- and intra-cellular membranes. ABC genes are divided into seven distinct subfamilies (ABC1, MDR/TAP, MRP, ALD, OABP, GCN20, White). This protein is a member of the ABC1 subfamily. Members of the ABC1 subfamily comprise the only major ABC subfamily found exclusively in multicellular eukaryotes. This full transporter has been detected predominantly in myelo-lymphatic tissues with the highest expression in peripheral leukocytes, thymus, spleen, and bone marrow. The function of this protein is not yet known; however, the expression pattern suggests a role in lipid homeostasis in cells of the immune system. [provided by RefSeq]

Other Designations

ATP-binding cassette, sub-family A, member 7|autoantigen SS-N|macrophage ABC transporter

Pathway

- [ABC transporters](#)

Disease

- [Arthritis](#)
- [Cardiovascular Diseases](#)
- [Diabetes Mellitus](#)
- [Edema](#)
- [Genetic Predisposition to Disease](#)
- [Lung Neoplasms](#)
- [Lupus Erythematosus](#)
- [Multiple Sclerosis](#)
- [Pulmonary Disease](#)
- [Schizophrenia](#)
- [Urinary Bladder Neoplasms](#)
- [Werner syndrome](#)