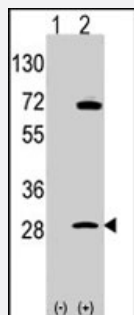


PHB polyclonal antibody

Catalog # PAB2547

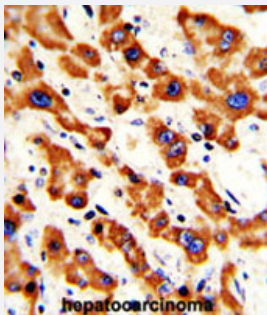
Size 400 uL

Applications



Western Blot (Transfected lysate)

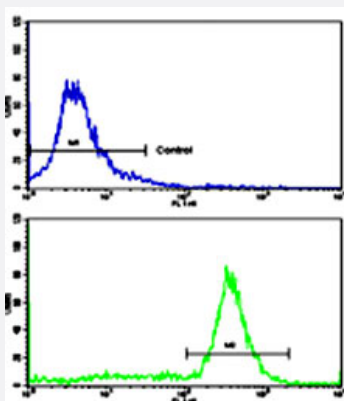
Western blot analysis of PHB1 (arrow) using rabbit PHB polyclonal antibody (Cat # PAB2547). 293 cell lysates (2 ug/lane) either nontransfected (Lane 1) or transiently transfected with the PHB1 gene (Lane 2) (Origene Technologies).



Immunohistochemistry (Formalin/PFA-fixed paraffin-embedded sections)

Formalin-fixed and paraffin-embedded human hepatocarcinoma reacted with PHB polyclonal antibody (Cat # PAB2547), which was peroxidase-conjugated to the secondary antibody, followed by AEC staining.

This data demonstrates the use of this antibody for immunohistochemistry; clinical relevance has not been evaluated.



Flow Cytometry

Flow cytometric analysis of ATDC5 cells using PHB polyclonal antibody (Cat # PAB2547) (bottom histogram) compared to a negative control cell (top histogram).

FITC-conjugated goat-anti-rabbit secondary antibodies were used for the analysis.

Specification

Product Description

Rabbit polyclonal antibody raised against synthetic peptide of PHB.

Immunogen	A synthetic peptide (conjugated with KLH) corresponding to amino acids 99-129 at N-terminus of human PHB.
Host	Rabbit
Reactivity	Human
Form	Liquid
Purification	Protein A purification
Recommend Usage	Western Blot (1:1000) Immunohistochemistry (1:50-100) Flow cytometry (1:10-50) The optimal working dilution should be determined by the end user.
Storage Buffer	In PBS (0.09% sodium azide)
Storage Instruction	Store at 4°C. For long term storage store at -20°C. Aliquot to avoid repeated freezing and thawing.
Note	This product contains sodium azide: a POISONOUS AND HAZARDOUS SUBSTANCE which should be handled by trained staff only.

Applications

- Western Blot (Transfected lysate)

Western blot analysis of PHB1 (arrow) using rabbit PHB polyclonal antibody (Cat # PAB2547). 293 cell lysates (2 ug/lane) either nontransfected (Lane 1) or transiently transfected with the PHB1 gene (Lane 2) (Origene Technologies).

- Immunohistochemistry (Formalin/PFA-fixed paraffin-embedded sections)

Formalin-fixed and paraffin-embedded human hepatocarcinoma reacted with PHB polyclonal antibody (Cat # PAB2547), which was peroxidase-conjugated to the secondary antibody, followed by AEC staining.

This data demonstrates the use of this antibody for immunohistochemistry; clinical relevance has not been evaluated.

- Flow Cytometry

Flow cytometric analysis of ATDC5 cells using PHB polyclonal antibody (Cat # PAB2547)(bottom histogram) compared to a negative control cell (top histogram).

FITC-conjugated goat-anti-rabbit secondary antibodies were used for the analysis.

Gene Info — PHB

Entrez GeneID

[5245](#)

Protein Accession#

[NP_002625:P35232](#)

Gene Name	PHB
Gene Alias	PHB1
Gene Description	prohibitin
Omim ID	176705
Gene Ontology	Hyperlink
Gene Summary	Prohibitin is an evolutionarily conserved gene that is ubiquitously expressed. It is thought to be a negative regulator of cell proliferation and may be a tumor suppressor. Mutations in PHB have been linked to sporadic breast cancer. Prohibitin is expressed as two transcripts with varying lengths of 3' untranslated region. The longer transcript is present at higher levels in proliferating tissues and cells, suggesting that this longer 3' untranslated region may function as a trans-acting regulatory RNA. [provided by RefSeq]
Other Designations	-

Publication Reference

- [Prohibitin silencing reverses stabilization of mitochondrial integrity and chemoresistance in ovarian cancer cells by increasing their sensitivity to apoptosis.](#)

Gregory-Bass RC, Olatinwo M, Xu W, Matthews R, Stiles JK, Thomas K, Liu D, Tsang B, Thompson WE.

International Journal of Cancer 2008 May; 122(9):1923.

Application: IF, IHC-P, WB-Ti, Human, Human ovarian cancer tissues, OVCAR3, OVCAR8 cells

- [The PHB1/2 phosphocomplex is required for mitochondrial homeostasis and survival of human T cells.](#)

Ross JA, Nagy ZS, Kirken RA.

The Journal of Biological Chemistry 2008 Feb; 283(8):4699.

Application: IP, WB, Human, Kit225, PBMCs, T cells

- [Assignment of the human prohibitin gene \(PHB\) to chromosome 17 and identification of a DNA polymorphism.](#)

J J White, D H Ledbetter, R L Eddy Jr, T B Shows, D A Stewart, M J Nuell, V Friedman, C M Wood, G A Owens, J K McClung, et al.

Genomics 1991 Sep; 11(1):228.

Disease

- [Breast cancer](#)

- [Breast Neoplasms](#)
- [Genetic Predisposition to Disease](#)
- [Lung Neoplasms](#)
- [Ovarian cancer](#)
- [Ovarian Neoplasms](#)
- [Pulmonary Disease](#)
- [Urinary Bladder Neoplasms](#)
- [Werner syndrome](#)