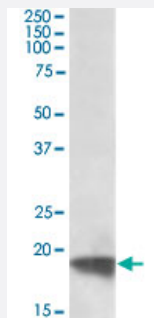


# ARF4 polyclonal antibody

Catalog # PAB25468      Size 100 ug

## Applications



### Western Blot (Cell lysate)

ARF4 polyclonal antibody (Cat # PAB25468) (0.5 ug/mL) staining of HeLa lysate (35 ug protein in RIPA buffer). Primary incubation was 1 hour. Detected by chemiluminescence.

## Specification

<b>Product Description</b>	Goat polyclonal antibody raised against synthetic peptide of ARF4.
<b>Immunogen</b>	A synthetic peptide corresponding to amino acids 137-150 at internal region of human ARF4.
<b>Sequence</b>	C-SEMTDKLGLQSLRN
<b>Host</b>	Goat
<b>Theoretical MW (kDa)</b>	19
<b>Reactivity</b>	Human
<b>Form</b>	Liquid
<b>Purification</b>	Antigen affinity purification
<b>Concentration</b>	0.5 mg/mL
<b>Recommend Usage</b>	Peptide ELISA (1:128000) Immunohistochemistry (5 ug/mL) Western Blot (0.3-1 ug/mL) The optimal working dilution should be determined by the end user.

Storage Buffer	In Tris saline, pH 7.3 (0.5% BSA, 0.02% sodium azide).
Storage Instruction	Store at -20°C. Aliquot to avoid repeated freezing and thawing.
Note	This product contains sodium azide: a POISONOUS AND HAZARDOUS SUBSTANCE which should be handled by trained staff only.

## Applications

- Western Blot (Cell lysate)

ARF4 polyclonal antibody (Cat # PAB25468) (0.5 ug/mL) staining of HeLa lysate (35 ug protein in RIPA buffer). Primary incubation was 1 hour. Detected by chemiluminescence.

- Immunohistochemistry
- Enzyme-linked Immunoabsorbent Assay

## Gene Info — ARF4

Entrez GeneID	<a href="#">378</a>
Protein Accession#	<a href="#">NP_001651.1</a>
Gene Name	ARF4
Gene Alias	ARF2
Gene Description	ADP-ribosylation factor 4
Omim ID	<a href="#">601177</a>
Gene Ontology	<a href="#">Hyperlink</a>

Gene Summary	<p>This gene is a member of the human ARF gene family whose members encode small guanine nucleotide-binding proteins that stimulate the ADP-ribosyltransferase activity of cholera toxin and play a role in vesicular trafficking and as activators of phospholipase D. The gene products include 5 ARF proteins and 11 ARF-like proteins and constitute one family of the RAS superfamily. The ARF proteins are categorized as class I, class II and class III; this gene is a class II member. The members of each class share a common gene organization. The ARF4 gene spans approximately 12kb and contains six exons and five introns. This gene is the most divergent member of the human ARFs. Conflicting map positions at 3p14 or 3p21 have been reported for this gene. [provided by RefSeq]</p>
--------------	---

Other Designations	ADP-ribosylation factor 2
--------------------	---------------------------